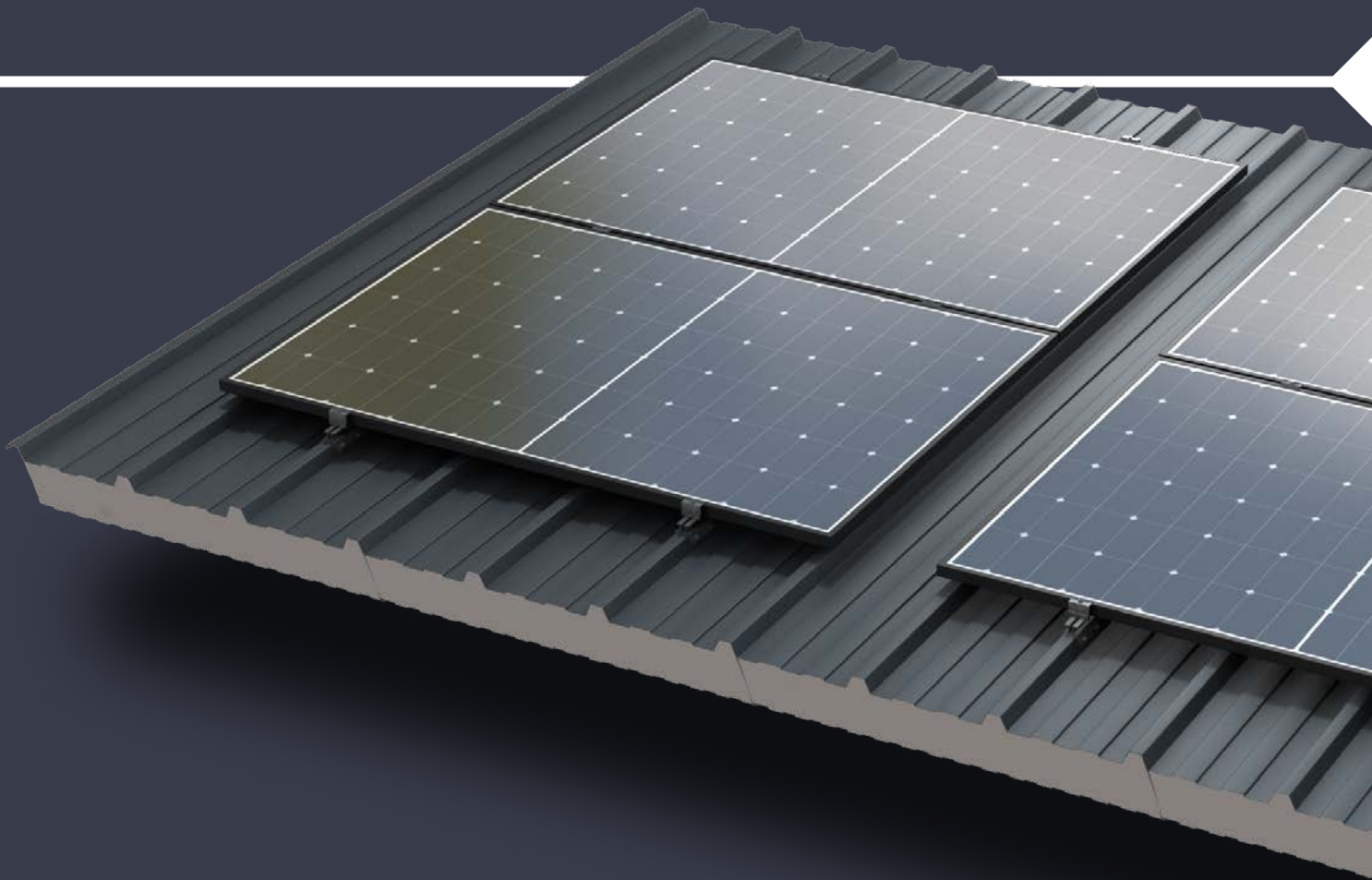


Insulated Panels
CEME Division

PowerRail RW

Rooftop Solar PV Mounting Solution



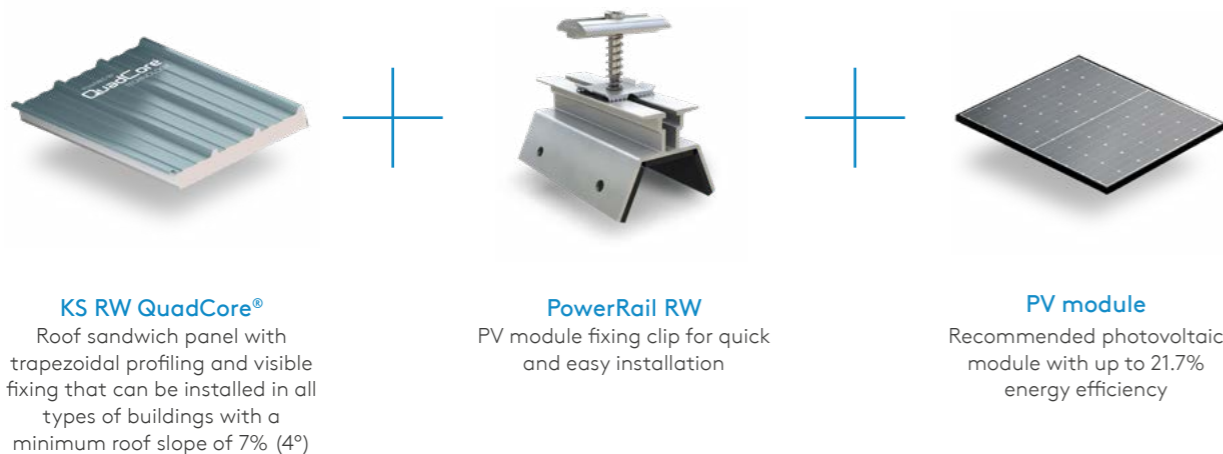
A system specially developed for the installation of photovoltaic modules with KS RW QuadCore® Roof Panels for both new build and retrofit projects.

Kingspan's PowerRail RW has been developed specifically for the installation of solar PV modules on pitched roofs with KS RW QuadCore® Roof Panels. PowerRail RW fixes directly to the external profile of the roof panel, making photovoltaic installation faster and easier than ever before.

Product Highlights

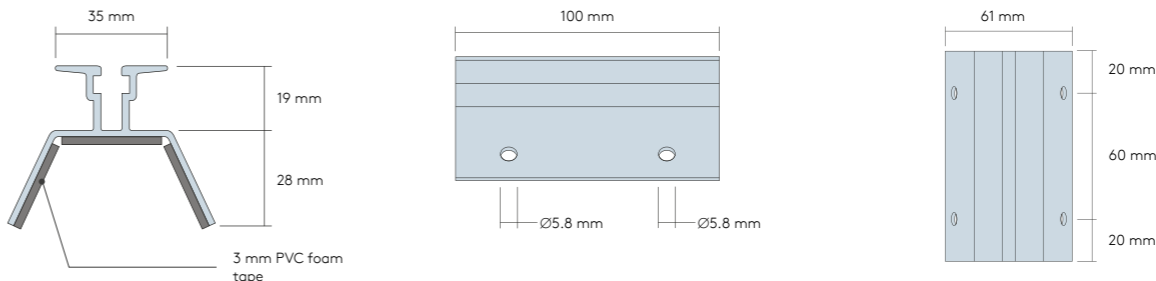
- Lightweight design
- Quick and easy installation
- Cost effective solution
- Fixings included
- Suitable for both new build and retrofit projects
- Compatible with most standard PV modules
- Can be sold as a system with KS RW QuadCore® Roof Panels, mounting system and PV modules or as a solar PV mounting system only
- KS RW QuadCore® Roof Panel coating warranty retained when using this system

System Components



Kingspan PowerRail RW Technical Information

Dimensions



Physical Properties

Weight:

- <1 kg / m²

Materials:

- A2 stainless steel fixing
- PVC foam tape
- Aluminum (EN AW-6060 T6)

Fixings:

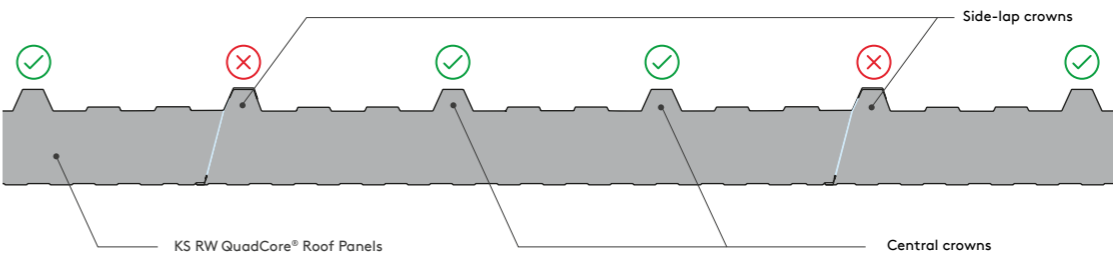
- High quality stainless steel grade A2 to ISO 3506, EN 1.4301 to ISO 10088 and AISI 304
- High quality hardened carbon steel drill point
- Pierce point geometry designed to minimise swarf generation
- S16 stainless / EPDM vulcanised sealing washers
- 8 mm Hex

Installation

Consideration should be given to the layout of a solar PV array in order to maintain the integrity of all weather seals and coatings of KS RW QuadCore® Roof Panels.

PowerRail RW is designed to be fixed only to the central crowns of KS RW QuadCore® Roof Panels and should not be installed into the end lap between two KS RW QuadCore® Roof Panels, see below.

Fixing Locations



Certification and Testing

Kingspan PowerRail RW has been tested to:

- EN 14437: 2004 - Determination of the uplift resistance of installed clay or concrete tiles for roofing - Roof system test method.
- CEN/TR 15601: 2012 - Hygrothermal performance of buildings - Resistance to wind-driven rain of roof coverings with discontinuously laid small elements - Test method.

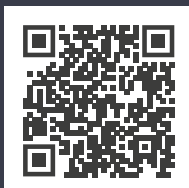
Kingspan PowerRail RW is a new product and will undergo a series of testing and certifications. Please consult our team or your local Kingspan representative regarding the latest testing and accreditation the product has achieved.

Contact Details

Poland

Kingspan Sp. z o.o.
Przemysłowa 20
27-300 Lipsko, Poland

T: +48 48 378 31 00
E: info@kingspan.pl
www.kingspan.pl



For the latest product details, please always refer to the latest version of this publication by scanning the QR code or by clicking on this link.

The information provided in this publication is accurate as of its date of publication and represents our commitment to quality and transparency. However, Kingspan Insulated Panels reserve the right to modify product specifications without prior notice to reflect advancements or improvements.

For applications not explicitly covered within this publication, consultation with our Technical Advisory Service is strongly advised to ensure the product meets your specific requirements. Customer are responsible for verifying the product's suitability for their particular needs and for ensuring compliance with all applicable laws and regulations.

We reserve the right to update this publication, and any other informational materials, at our discretion and without notice.

For the latest information, please visit: www.kingspan.com/country.

