

## Age of Drivers Involved in Accidents: 2009-2012

18-25

2009: 11.3%  
2010: 8.9%  
2011: 7.7%  
2012: 7.7%

26-35

2009: 16.7%  
2010: 17.0%  
2011: 26.2%  
2012: 24.4%

36-45

2009: 16.7%  
2010: 17.0%  
2011: 27.4%  
2012: 27.6%

Highest percentage involved in accidents in 2012.

Drivers between the ages of 36 and 45 continue to be involved in the highest percentage of accidents in 2012.

SOURCE: FLEET RESPONSE

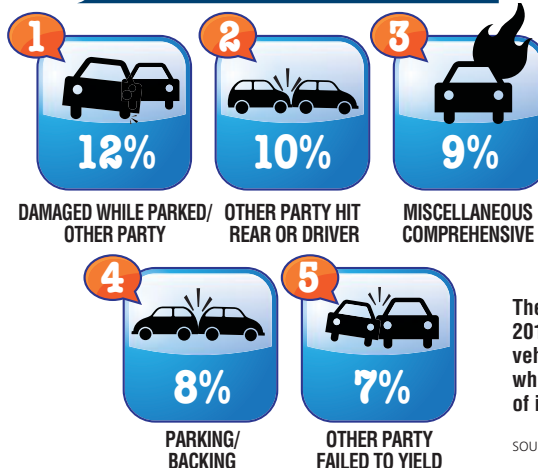
46-54

2009: 16.7%  
2010: 17.0%  
2011: 22.5%  
2012: 24.1%

55+

2009: 16.7%  
2010: 17.0%  
2011: 16.1%  
2012: 16.9%

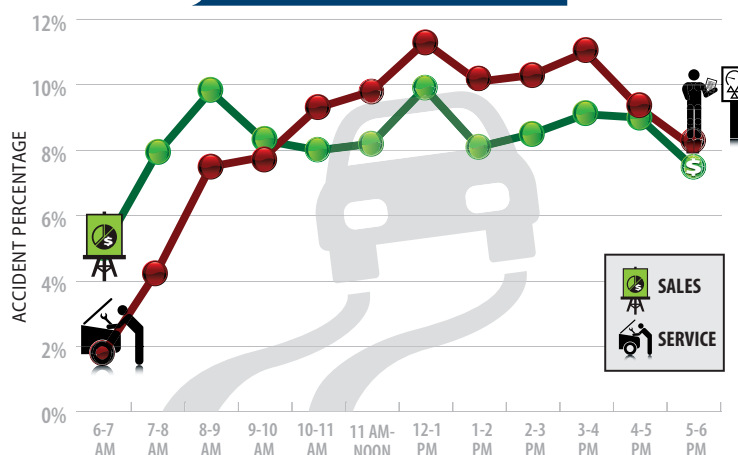
## Top 5 Accident Descriptions



The top type of accident in 2011 was damage to a fleet vehicle by another vehicle while parked, at 12 percent of incidents.

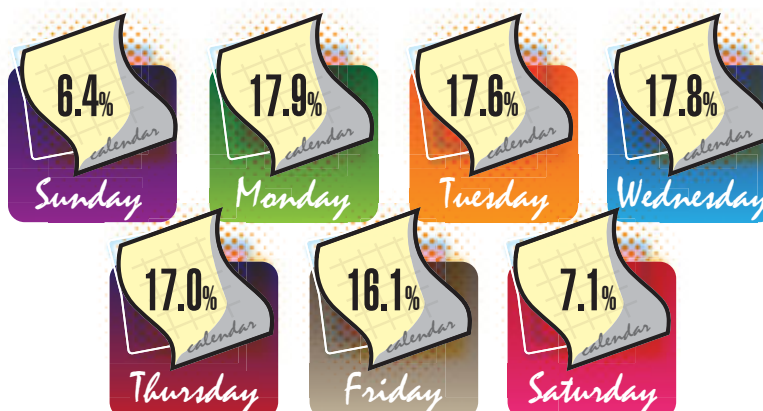
SOURCE: PHH ARVAL

## Accidents by Time of Day



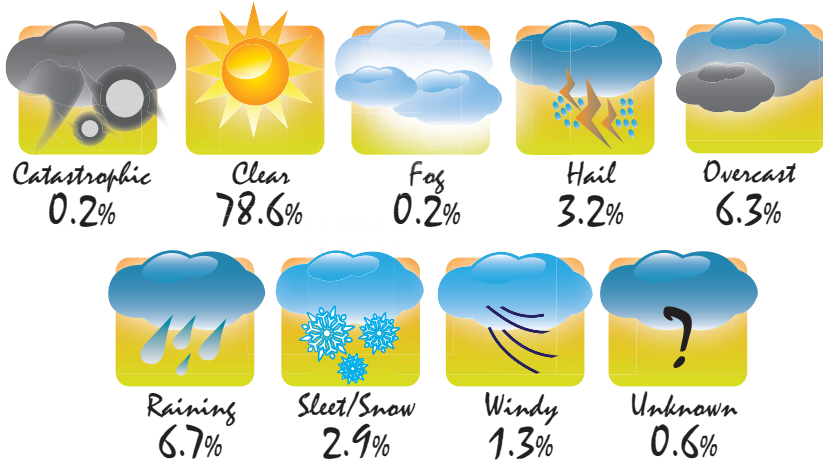
Sales fleet drivers experienced the highest percentage of accidents between the hours of 8 a.m. and 9 a.m., while service fleet drivers experience the highest percentage of accidents between the hours of 12 p.m. and 1 p.m. SOURCE: FLEET RESPONSE

## Accidents by Day of Week



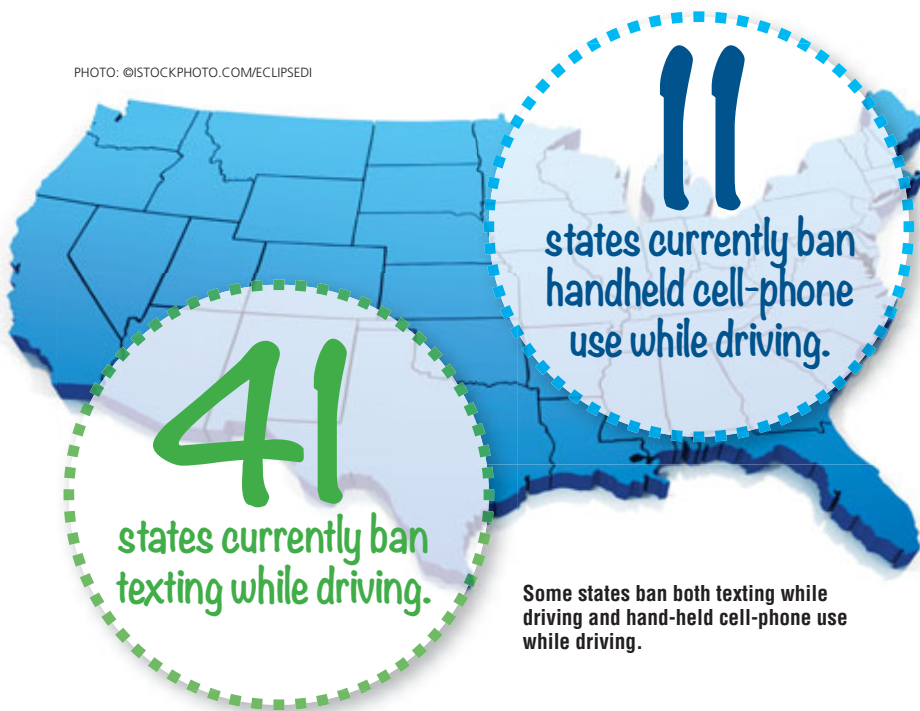
Perhaps due to drivers having a "case of the Mondays," the first day of the typical work week shows the highest percentage of accidents at 17.9 percent. SOURCE: THE CEI GROUP

## Accidents by Weather Type



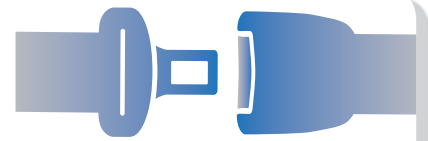
The majority of accidents (78.6 percent) occurred on clear, sunny days, followed by rainy days at 6.7 percent. SOURCE: THE CEI GROUP

PHOTO: ©ISTOCKPHOTO.COM/ECLIPSEDI



SOURCE: GHSA.ORG

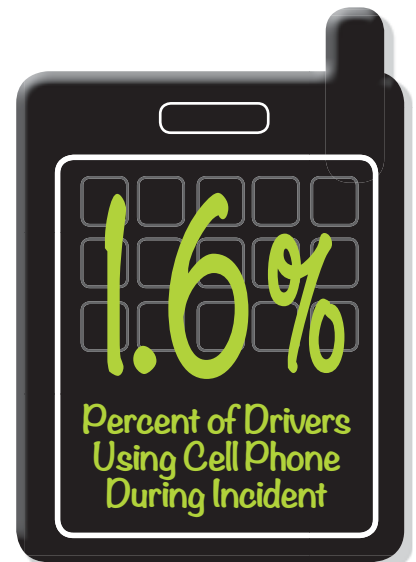
SPONSORED BY



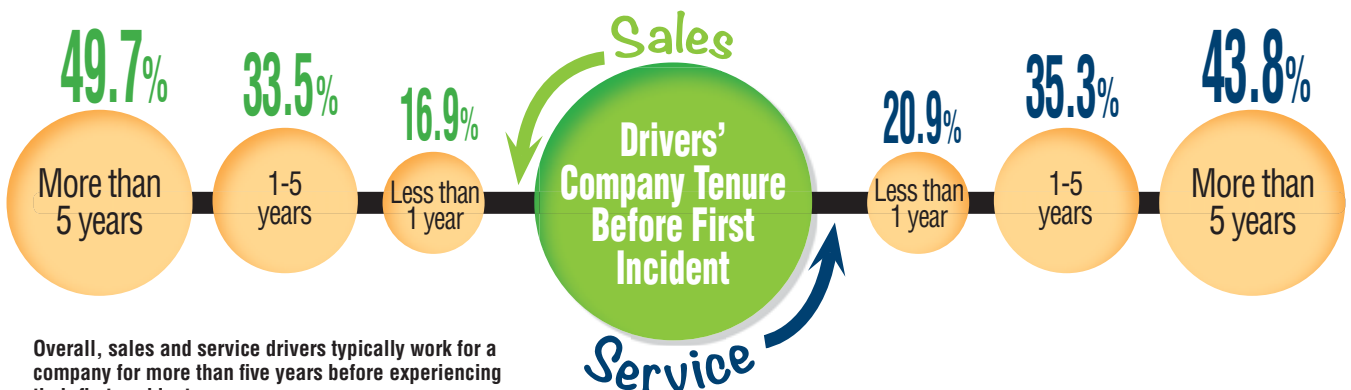
**2.3%**

Percent of Drivers Not Wearing a Seat Belt During an Incident.

SOURCE: THE CEI GROUP



SOURCE: THE CEI GROUP



Overall, sales and service drivers typically work for a company for more than five years before experiencing their first accident.

SOURCE: FLEET RESPONSE