

Injury attendances to North Manchester General Hospital Accident and Emergency Department

April 2008 to March 2009

This report summarises recorded injury attendances to North Manchester General Hospital Accident and Emergency Department (AED) between April 2008 and March 2009.

Between April 2008 and March 2009 there were 65,755 injury attendances to North Manchester General Hospital AED. Males accounted for just over half of all attendances (n=33,213; 51%). The month with the highest attendances was May (n=5,913) with February having the lowest attendances (n=4,917) (**Figure 1**). The majority of attendances were recorded as other (86%). Of the specified injury groups fall accounted for the highest proportion (8%) followed by road traffic collision (RTC) (2%) and assault (2%) (**Table 1**).

For all injuries the highest proportion of attendances were for persons aged 20-34 (31%) and 35-49 (23%) (**Figure 2**). Over two-fifths of fall attendees (43%) were aged 65 or over. Nearly half (49%) of assault attendees were aged 20-34. Nearly half (47%) of RTC attendees were aged 20-34 (**Figure 3**).

Table 2 shows the location of the incident of injury attendances. Two-thirds (67%) of injuries occurred in the home. Nearly one in ten (9%) injuries occurred in a public place with a smaller proportion occurring at work (4%). Over half (51%) of assaults occurred in a public place. Half (50%) of falls occurred in the home.

Table 3 shows the ethnicity of attendees to North Manchester General Hospital AED. Over three-quarters (n=53,323; 81%) were white, 6% were Pakistani and 4% were black.

The disposal of a patient can give an indication of the severity of the injuries sustained. More than two fifths (42%) of attendees were discharged, over a quarter (26%) were admitted and 25% had a referral (**Table 4**). Over three-quarters (71%) of RTC attendees were discharged while 4% were admitted. Over half (52%) of burn/scald attendees had a referral. (**Table 5**).

Table 6 shows the arrival methods of attendances at North Manchester General Hospital AED. Over half (58%) arrived by car while nearly three in ten (29%) arrived by ambulance.

Figure 4 (a-d) shows crude rates of attendance at North Manchester General Hospital AED by attendee's area of residence, in this case Middle Super Output Area (MSOA). The MSOAs with the highest crude rates are indicated beneath each figure.¹

¹ Population figures are drawn from mid-2008 population estimates from the Office for National Statistics.

Figure 1: North Manchester General Hospital AED: Total injury attendances by gender and month, April 2008 to March 2009

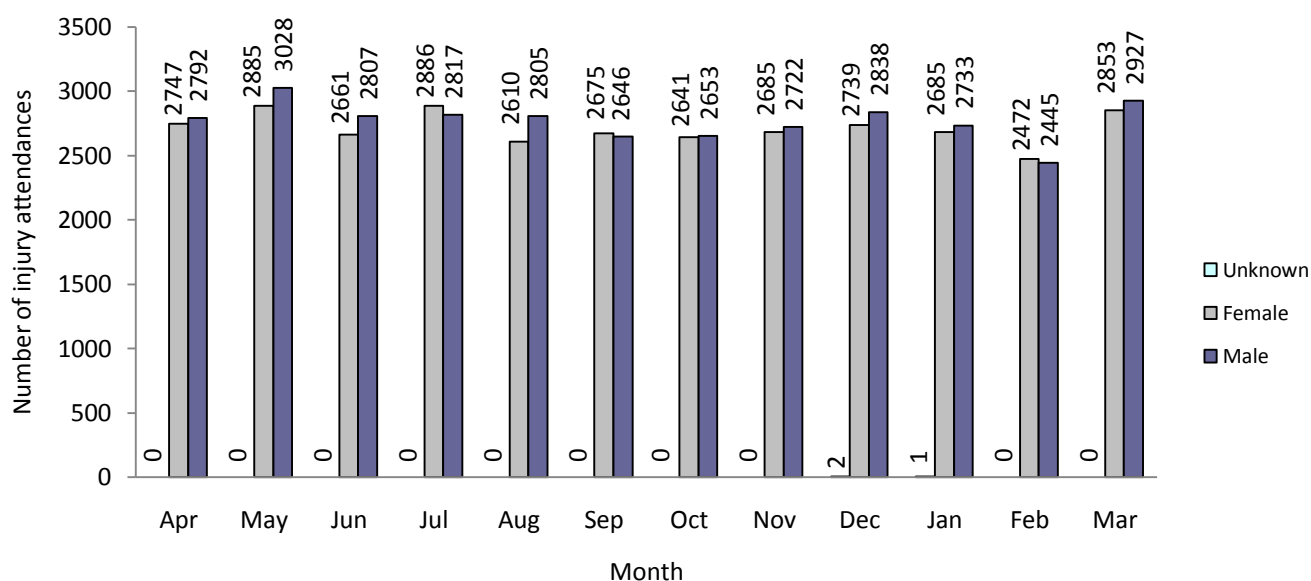


Table 1: North Manchester General Hospital AED: Total injury attendances by injury group and month, April 2008 to March 2009

Injury	Apr	May	Jun	Jul	Aug	Sep	Oct	Nov	Dec	Jan	Feb	Mar	Total	%
Other	4775	5091	4774	5016	4749	4615	4602	4673	4713	4588	4254	4998	56848	86
Fall	477	504	456	467	402	442	408	444	561	523	447	453	5584	8
RTC	111	114	84	74	104	100	141	122	130	144	113	148	1385	2
Assault	101	136	94	88	107	91	92	111	106	103	59	96	1184	2
Burn/scald	52	51	47	48	36	57	45	50	54	48	37	66	591	1
Deliberate self-harm (DSH)	23	17	13	10	17	16	6	7	15	13	7	19	163	0
Total	5539	5913	5468	5703	5415	5321	5294	5407	5579	5419	4917	5780	65755	100

Figure 2: North Manchester General Hospital AED: Total injury attendances by age group and month, April 2008 to March 2009

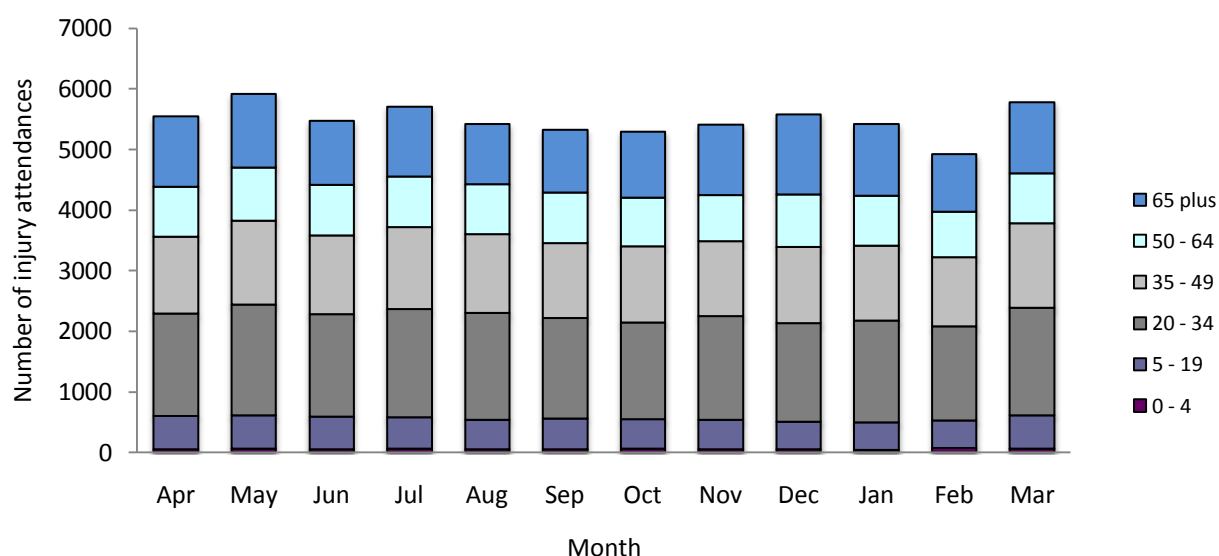


Figure 3: North Manchester General Hospital AED: Total injury attendances by age group and injury group, April 2008 to March 2009

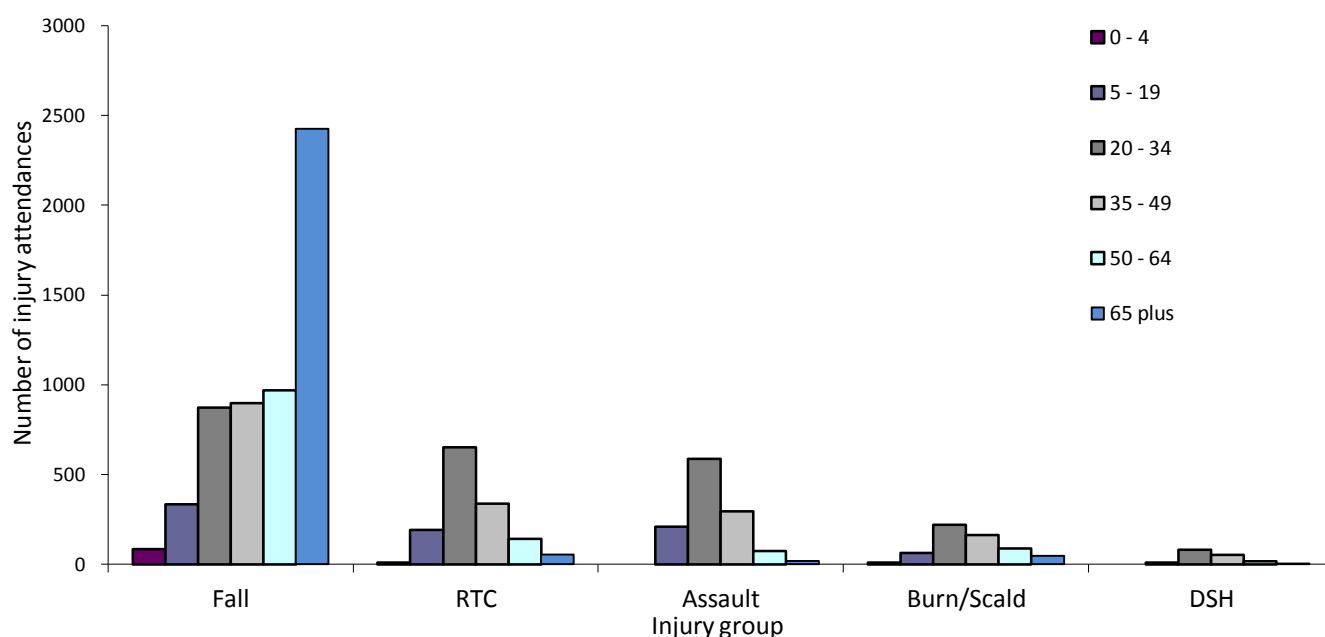


Table 2: North Manchester General Hospital AED: Total injury attendances by location of incident and injury group, April 2008 to March 2009

Location	Assault	%	Burn/scald	%	DSH	%	Fall	%	RTC	%	Other	%	Total	%
Home	254	21	239	40	110	67	2775	50	40	3	40489	71	43907	67
Other	282	24	271	46	45	28	1298	23	1314	95	10214	18	13424	20
Public place	607	51	***	***	***	***	1310	23	30	2	3732	7	5702	9
Work	41	4	63	11	***	***	173	3	***	***	2232	4	2510	4
School	0	0	***	***	***	***	28	1	***	***	181	0	212	0
Total	1184	100	591	100	163	100	5584	100	1385	100	56848	100	65755	100

Table 3: North Manchester General Hospital AED: Total injury attendances by ethnicity and month, April 2008 to March 2009²

Ethnicity	Apr	May	Jun	Jul	Aug	Sep	Oct	Nov	Dec	Jan	Feb	Mar	Total	%
White	4503	4763	4389	4648	4397	4335	4290	4443	4488	4364	3968	4735	53323	81
Pakistani	325	395	361	352	328	312	334	286	311	331	304	309	3948	6
Black	245	254	207	246	207	234	236	217	223	234	193	214	2710	4
Other	163	200	194	184	190	166	155	193	221	176	189	191	2222	3
Unknown	155	163	183	154	148	146	167	156	196	171	151	215	2005	3
Mixed	71	70	52	41	73	72	54	56	66	66	55	54	730	1
Indian	46	37	40	46	54	31	36	33	43	51	30	36	483	1
Chinese	***	***	***	***	***	***	***	18	***	19	***	***	292	0
Bangladesh	***	***	***	***	***	***	***	5	***	7	***	***	42	0
Total	5539	5913	5468	5703	5415	5321	5294	5407	5579	5419	4917	5780	65755	100

² White = Irish, British, other white background; Mixed = white and black, white and Asian, mixed any other; Other = any other ethnic group, any other Asian background; Black = African, Caribbean, other black.

Table 4: North Manchester General Hospital AED: Total injury attendances by method of disposal and month, April 2008 to March 2009³

Disposal	Apr	May	Jun	Jul	Aug	Sep	Oct	Nov	Dec	Jan	Feb	Mar	Total	%
Discharged	2725	2972	2788	2863	2412	2096	2117	1927	2029	1974	1808	1865	27576	42
Admitted	1339	1306	1203	1359	1350	1359	1437	1460	1576	1525	1394	1759	17067	26
Referred	1112	1249	1155	1153	1353	1581	1454	1584	1529	1522	1378	1681	16751	25
Other	363	386	322	328	300	285	286	436	445	398	337	475	4361	7
Total	5539	5913	5468	5703	5415	5321	5294	5407	5579	5419	4917	5780	65755	100

Table 5: North Manchester General Hospital AED: Total injury attendances by method of disposal and injury group, April 2008 to March 2009

Disposal	Other	%	Fall	%	RTC	%	Assault	%	Burn/Scald	%	DSH	%	Total	%
Discharged	23151	41	2572	46	977	71	572	48	227	38	77	47	27576	42
Admitted	15652	28	1157	21	59	4	155	13	15	3	29	18	17067	26
Referred	14162	25	1628	29	342	25	291	25	308	52	20	12	16751	25
Other	3883	7	227	4	7	1	166	14	41	7	37	23	4361	7
Total	56848	100	5584	100	1385	100	1184	100	591	100	163	100	65755	100

Table 6: North Manchester General Hospital AED: Total injury attendances by mode of arrival and month, April 2008 to March 2009

Mode	Apr	May	Jun	Jul	Aug	Sep	Oct	Nov	Dec	Jan	Feb	Mar	Total	%
Car	3424	3552	3288	3550	3259	3114	2945	3093	2973	2978	2773	3173	38122	58
Ambulance	1516	1637	1552	1584	1526	1469	1543	1658	1831	1644	1392	1681	19033	29
Other	108	108	168	117	129	244	230	211	280	315	332	408	2650	4
Unknown	205	231	161	186	167	164	210	142	142	153	149	180	2090	3
Foot	116	158	138	125	144	161	137	131	132	153	108	169	1672	3
Taxi	101	134	93	79	110	108	161	99	137	119	87	96	1324	2
Bus	35	63	43	29	47	35	42	38	46	29	50	48	505	1
Police	32	24	22	28	30	26	21	33	36	24	23	24	323	0
Work	***	***	***	***	***	***	***	***	***	***	***	***	***	0
Helicopter	***	***	***	***	***	***	***	***	***	***	***	***	***	0
Total	5539	5913	5468	5703	5415	5321	5294	5407	5579	5419	4917	5780	65755	100

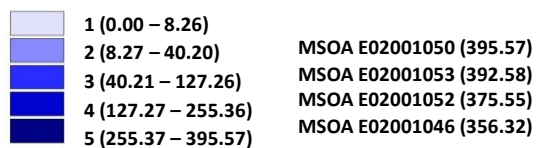
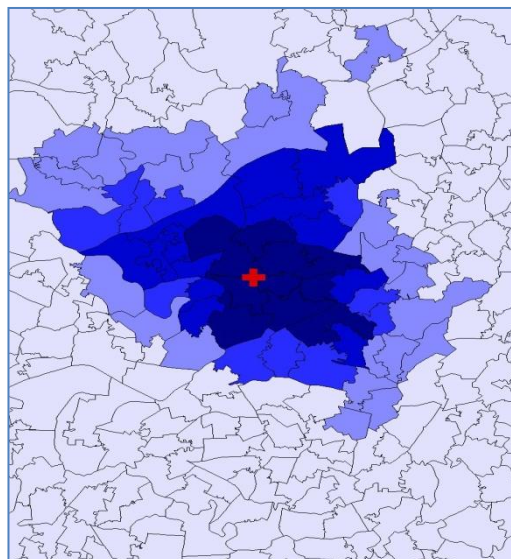
For further information please contact: Centre for Public Health, Research Directorate, Liverpool John Moores University, 5th Floor, Kingsway House, Hatton Garden, Liverpool, L3 2AJ, Tel: 0151 231 8724 or Email: i.j.warren@ljmu.ac.uk
Website: www.tiig.info (data requests should be made through the website)

³ Admitted=admitted to AED bed/became a lodged patient of the same health care provider; Discharged=discharged - did not require any follow up treatment; Referral/follow-up =discharged - follow up treatment to be provided by GP, referred to AED clinic, referred to fracture clinic, referred to other out-patient clinic, transferred to other health care provider, referred to other health care professional; Other=died in department, left department before being treated, left department having refused treatment, other.

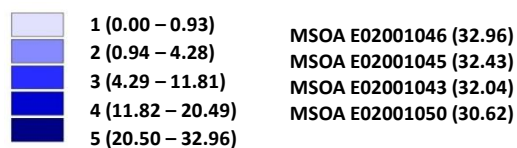
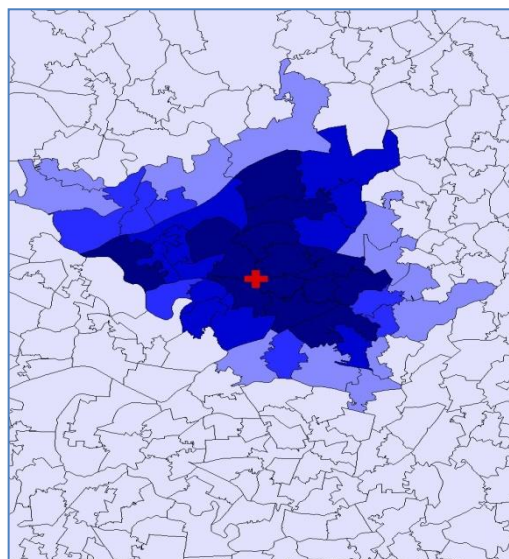
Figure 4a,b,c,d: Middle Super Output Area of residence for injury attendances to North Manchester General Hospital AED. Quintiles of crude rates per 1,000 population, April 2008 to March 2009

a) All injury attendances: quintiles of crude rates per 1,000 population b) Fall: quintiles of crude rates per 1,000 population

✚ North Manchester General Hospital AED

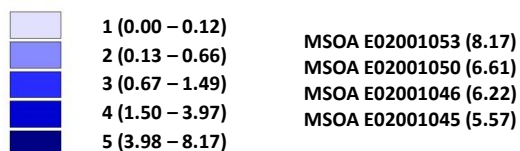
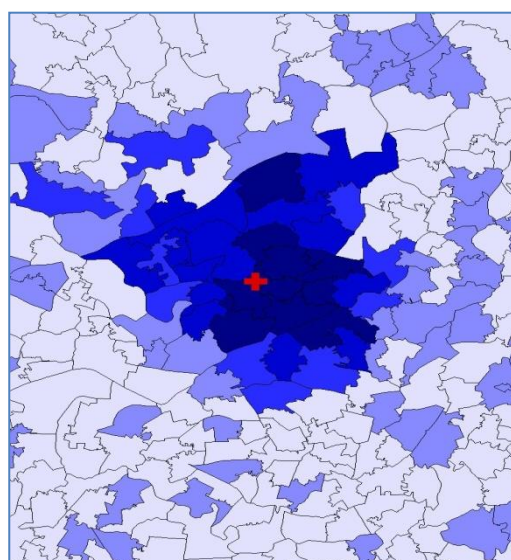


✚ North Manchester General Hospital AED



c) Assault: quintiles of crude rates per 1,000

✚ North Manchester General Hospital AED



d) RTC: quintiles of crude rates per 1,000 population

✚ North Manchester General Hospital AED

