



Industrial
Automation



Product Line Guide for Industrial Automation



Find out more
www.bimba.com

1.800.442.4622
cs@bimba.com

IMI

Roundline Actuators

**Original Line Series**

Non-repairable stainless steel body
12 Bore Sizes from 5/16" - 3"

**Original Line Three Position**

Single cylinder with 3 distinct positions
9/16" - 2" bores

**Original Line with Adjustable Cushions**

Protection against kinetic energy
3/4" - 3" bores

**Original Line MRS**

Magnetic piston standard
9/16" - 2-1/2" bores

**Original Line Non-Rotating**

Square rod design
9/16" - 2-1/2" bores

**Original Line PC Series**

Delrin end caps
9/16" - 2" bores

**Original Line All Stainless Steel**

Stainless steel body and end caps
Food grade grease
5/16" - 3" bores

**Original Line Z-Line**

Heavy duty roundline
3/4" - 2" bores

**Original Line Rod Lock**

Built-in mechanical lock
3/4" - 3" bores

**Hole Punch Cylinder**

1-4"-5/8" diameter cutter and non-cutter options available

**Position Feedback**

Internal transducer for feedback or control
1-1/16" - 3" bores

**Centaur**

Repairable roundline
1-1/4" - 3" bores

**Double-Wall**

NFPA interchangeable cylinder with an epoxy coated outer body
1-1/2" - 4" bores

**Repairable Stainless Steel Design**

Food grade grease and secondary wiper
1-1/2" - 8" bores

**Single Acting Air Clamps**

Gripping power on extend stroke and spring retract
15 different models

Compact Actuators

**Flat-1**

8 bore sizes from 9/16" - 4" bores

**Flat-II**

Non-rotating twin rod
3/4" - 2" bores

**Square Flat-1**

Horizontal and side mounting
3/4" - 4" bores

**Square Flat-II**

Horizontal and side mounting with non-rotating Twin Rod
3/4" - 2" bores

**Stainless Steel Flat-1**

Corrosion resistant, IP69K rated
9/16" - 4" bores

**Flat-1 Multiple Power**

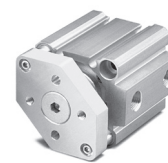
Available in 2, 3 and 4 stage force multiplier
2-1/2", 3" and 4" bores

**Flat-1 Multiple Position**

Compact with three distinct positions
9/16" - 4" bores

**EF-1**

Extruded body with interchangeable dimensions
12mm - 100mm bores

**EF-2**

Guided and non-rotating extruded body
12mm - 100mm bores

**EFP/EFQ**

Multi-position and multi-power extruded body designs
12mm - 100mm bores



online configurators available for cylinders, valves, and FRLs:
www.bimba.com



**Twin Bore**

Basic, double end rod and air table styles available
6mm - 32mm bores

**NPA**

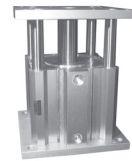
Single bore air table with precise load guiding
12mm, 20mm, 32mm bores

**Stopper Cylinder**

Made to withstand side impact loading
32mm bore

**Twist Clamp**

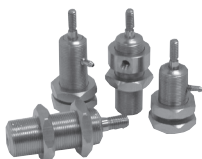
Combination rotary and linear motion
23mm - 63mm bores

**Extruded Flat Lift Table**

Four guide shafts for supporting vertical lifting
50mm, 80mm, 100mm bores

**Space Saver**

Unique compact design
3/4" - 4" bores

**Miniature Air Cylinders**

MF and MA series for extremely tight spaces
1/4", 3/8", and 1/2" bores

NFPA Actuators**PA Series**

NFPA interchangeable, cost effective
1-1/2" - 4" bores

**TA Series**

Aluminum body NFPA interchangeable
1-1/2" - 12" bores

**TD Series**

Heavy duty aluminum body NFPA interchangeable design
1-1/2" - 8" bores

**FM Series**

Aluminum body NFPA interchangeable design with sleeve nut constructions
1-1/2" - 8" bores

**SS Series**

Heavy duty stainless steel cylinders interchangeable design
1-1/2" - 8" bores

**TAS Series**

Steel body NFPA interchangeable design
1-1/2" - 8" bores

**TRA Series**

Triple rod for non-rotating
1-1/2" - 8" bores

**Back to Back**

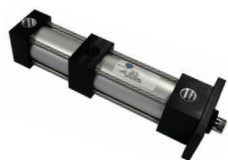
Two cylinders combined into one unit
1-1/2" - 8" bores

**Multi-Stage**

Multiple pistons used to increase force
1-1/2" - 8" bores

**Stainless Steel Multi-Stage**

Multiple piston design in a stainless steel body
1-1/2" - 8" bores

**Three Position**

Single cylinder unit with 3 distinct positions
1-1/2" - 8" bores

**FM with Rod Lock**

Aluminum body design with 100% ball bearing rod lock
1-1/2" - 6" bores

**Position Feedback**

Offers continuous position sensing
1-1/2" - 6" bores

**Bench Top Press**

Heavy duty steel keyed and bolted construction
5" bore

Find out more



Guided Actuators



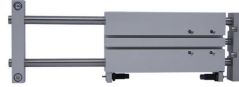
TE Series Thruster

Composite bearings for high loads
9/16" - 3" bores



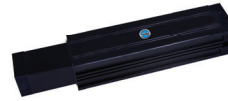
T Series Thruster

Ball bearings for high precision
9/16" - 3" bores



ET Series Thruster

Extruded body, compact profile
12mm - 32mm bores



PneuMoment®

Heavy moment loading capability
1-1/16" - 2-1/2" bores



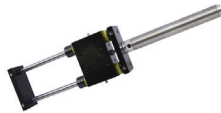
Multiple Position Thruster

3 positions in composite or ball bearing options
9/16" - 2" bores



4 Shaft T Series

Higher load ball bearing thruster
2", 2-1/2", 3" bores



Movable Housing Thruster

Composite or ball bearing options
9/16" - 3" bores

Rodless Actuators



Ultran Rodless

Magnetically coupled
5/16" - 2" bores



Ultran Rodless Slide

Magnetically coupled with built in guide
5/16" - 2" bores



Ultran High Load Slide

High moment load capability
1-1/16", 1-1/4", & 1-1/2" bores



Ultran Band

Mechanically coupled
18mm - 63mm bores

Rotary Actuators



Pneu-Turn

Rack and pinion, single and double rack configurations
9/16" - 2" bores



Pneu-Turn 3 Position

Three distinct rotation positions, single and double rack configurations
9/16" - 2" bores



Position Feedback Pneu-Turn

Transducer installed for feedback or control
1-1/2" - 2" bores

ISO Actuators



ISO 15552

Extruded body conforms to ISO 15552 standards
32mm - 125mm bores



ISO 6432

Roundline cylinder conforms to ISO 6432 standards
10mm - 25mm bores



online configurators available for cylinders, valves, and FRLs:
www.bimba.com



Hydraulic Actuators



Original Line Cylinder

With 'HL' option - 250 PSI
5/16" - 3" bores



500 Series Original Line

Replaceable rod stud - 500 PSI



Standard Aluminum 'TA' & 'FM'

with 'TH' option - 400 PSI
1-1/2" - 12" bores



MH Series

NFPA tie-rod for up to 1500 PSI
1-1/2" - 8" bores



HH Series

NFPA tie-rod for up to 3000 PSI
1-1/2" - 8" bores



CMH Series

Compact medium pressure
hydraulic up to 2030 PSI
25mm - 101mm bores



CHH Series

Compact high pressure hydraulic
up to 3000 PSI
25mm - 76mm bores

Electric Actuators



Norgren ELION Rod-style

32, 40, 50, 63, 80, 100mm bores
ISO 15552 ball screw
Stroke up to 59"
Thrust: up to 6,800 lbs.



Norgren ELION Rodless

48, 60, 80, 100mm bores
Toothbelt or ball screw
Stroke up to 18 feet
Belt Thrust: up to 337 lbs.
Screw Thrust: up to 2,282 lbs.



EFE/EFET Extruded Flat

16, 20, 25, 32, 40, 50mm bores
Stroke up to 5"
Thrust: up to 260 lbs.



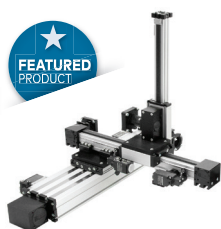
EET Extruded Thruster

16, 20, 25, 32mm bores
Ideal for high side loading applications
Stroke up to 10"
Thrust: up to 248 lbs.



NPET Narrow Profile Table

20 & 32mm bores
Ideal for cartesian-type and
pick & place applications
Stroke up to 8"
Thrust: up to 248 lbs.



Multi-Axis

2-axis, 3-axis and more
Highly configurable in any profile
style and size combination
Extensive library of mountings
and accessories



L Series

40mm - 100mm profile sizes
Compact design
Flexible mounting
Low maintenance



Q Series

60 - 125mm profile sizes
Suitable for clean room
applications
Flexible mounting
High operational reliability



E Series

30mm - 125mm profile sizes
Long travel distances
High dynamics and speed capable
Most available configurations



D Series

120, 160, 200mm profile sizes
High-load bearing capacity
Internal guiding
High rigidity

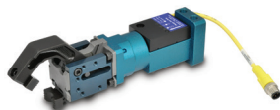


Grippers



BPGS Series

Pneumatic gripper system
Gripping forces up to 450 lbs. at 80 PSI



BPGS Hot Metal Gripper

Pneumatic gripper system - high temperature
Gripping forces up to 450 lbs. at 80 PSI
Max. operating temperature: 1650°F

Switches



Band Mounted

Edge detection
10-28 VDC, 50mA rating



Track Mounted

Edge detection
10-28 VDC, 50mA rating



Tie-Roded Mounted

Models available for cylinders with
a 5" bore size or greater
For use with Original Line,
Pneu-Turn, Guided Thrusters,
Double-Wall, RS cylinders



Digital Pressure

(2) individually programmed sinking
(NPN) or sourcing (PNP) digital outputs
(1) 1-5V or 4-20mA analog output
optional IP65 enclosure protection

Sensors



Threaded Proximity Sensors

End of stroke switches
compatible with Ultram®
rodless cylinders



BPT Pressure Transducer

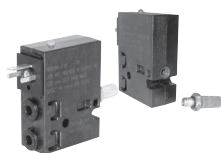
Pressure ranges from
vacuum to 5,000 PSI
IP67 stainless steel housing
Accuracy 0.4% FS, BFS



online configurators available for cylinders, valves, and FRLs:
www.bimba.com



Directional Control Valves



Isonic® V1000

Manifold mounted
Port: PIF 5/32", 1/4"
Function: 2/2, 3/2
Cv: 0.01 to 0.05
Voltage: 12-24 VDC, 24-120 VAC



Nova

Inline solenoid and air pilot
Port: 1/8" and 1/4"
Function: 4/2
Cv: 0.07 to 1.0
Voltage: 12-24 VDC, 24-120, 220-240 VAC



Capsula

Sub-base manifold
Port: 1/4" and 1/2"
Function: 2/2, 3/2, 5/2, 5/3
Cv: 0.07 to 3.17
Voltage: 12-24 VDC, 24-120, 220-240 VAC



Dura-Matic

Pressure and bleed valve
Port: 1/4" and 1/8"
Operating pressure: 20 - 150 PSI



Miniature Manual

Port: 10-32 UNF (F), 1/8" NPT/
10-32 UNF (F), 1/8" (F) NPT
Function: 2/2, 3/2, 5/2
Cv: 0.2 to 0.54

Specialty Valves



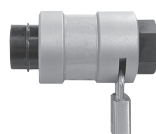
CSV

Two-hand anti-tiedown controls
Port: 1/8", PIF 1/4", 1/8"
Cv: 0.11 to 1.00



LTV

Low stress valves
Port: 1/8"
Function: 5/2
Cv: 0.24



SLV

Slide/lockout valves
Port: 1/4", 3/8", 1/2"
Function:
Cv: 0.94 to 3.18



MHL

Rotary hand valve
Port: 1/8"
Function: 4/2, 4/3
Cv: 0.14



Dyna-Coil

Mini solenoid valves
Port: 1/4", 3/8", 1/2"
Function: 2/2, 3/2
Cv: 0.94 to 3.18
Voltage: 12-24 VDC, 24-120-240 VAC



ACV

Dash/panel mount PTO control valve
Port: 5/32", 1/4"
Cv: 0.053 to 0.12
Voltage: 12-24VDC



Pneumatic Isolation Valve (PIV)

OSHA required lockout/tagout
Port: 1/4"-1-1/2"
Cv: 2.0 to 54.0



BPV Series

Pneumatic pinch valve
Supports tubing from 0.125" - 0.500"



600/900 Series

Pneumatic pinch valve
Supports tubing from 0.187" - 1.625"



Versagrip® Solenoid

Solenoid pinch valve
Supports tubing from 0.063" - 0.375"

Function Fittings and Flow Control Valves



Flow Control Valves

Inline and right-angle flow controls
Port: 1/8", 1/4", 1/2"
Cv: 0.1 to 3.1



SV/CV Series

Shuttle/check valves
Port: 1/8", 1/4"
Cv: 0.4 to 0.32



QEV

Quick exhaust valve
Port: 1/8", 1/4", 3/8", 3/4", 1"
Cv: 0.10 to 4.40



PBV Series

Bleed valves
Port: 10-32 UNF, 1/8", 1/4"



Needle Valves

Port: 10-32 UNF, 1/8"
Cv: 0.09



Logic Valves

Port: 1/8", 1/4", 1/2"
Function: binary/timers/relay
Cv: 0.12 to 0.75



Stroke Completion Sensors

Send air signal when rod motion stops
Port: 1/8", 1/4", 3/8", 1/2"

Find out more



Fittings & Accessories



Metal Push-In

Nickel plated brass
Inch - 1/8" to 1/2" O/D tube
Metric - 4 to 12mm O/D tube
Vacuum to 260 psi

Composite Push In

Composite
Inch - 1/8" to 1/2" O/D tube
Metric - 3 to 16mm O/D tube
Vacuum to 150 psi

Barb Fittings

Nickel plated brass
Inch - 1/16" to 3/8" I/D tube

Silencers

Bronze and plastic
10-32 UNF, 1/8", 1/4", 3/8", 1/2"

Tubing

Single and multi-bore
polyurethane
1/8", 5/32", 1/4", 5/16", 3/8"



Manifolds

Available in a variety of port sizes, configurations, and materials including aluminum, brass, stainless steel, polypropylene, and nylon materials.

Air Jets

For cooling and blowing
1/32 and 1/16 orifice
Cv: 0.02 to 0.10



MFD Series

Actuators



MACQ

Extruded body cylinders, inter-changeable dimensions
12mm - 100mm bores



MTC Series

Extruded thruster with bronze or ball bushing
12mm - 63mm bores



MHRQ

Double rack and pinion
4 model sizes

Air Preparation



MGAFC

Combination unit
1/8" to 1/2" NPT
Pressure range: 20 to 130 PSI
Temperature range: 23°F to 158°F



MGAFR Series

Filter / regulator
1/8" to 1" NPT
Pressure range: 20 to 130 PSI
Temperature range: 23°F to 158°F



MGAF

Filter
1/8" to 1" NPT
Pressure range: 20 to 145 PSI
Temperature range: 23°F to 158°F



MGAFB

Coalescing filter
1/8" to 1/2" NPT
Pressure range: 20 to 145 PSI
Temperature range: 23°F to 158°F



MGAL

Lubricator
1/8" to 1" NPT
Pressure range: 7 to 145 PSI
Temperature range: 23°F to 158°F



MGAR

Regulator
1/8" to 1" NPT
Pressure range: 7 to 130 PSI
Temperature range: -4°F to 158°F



MSR

Miniature regulator
1/8", 1/4" NPT
Pressure range: 7 to 130 PSI
Temperature range: -4°F to 158°F



MGZ

Pressure relief valve
1/8" to 1/2" NPT
Pressure range: 0 to 130 PSI
Temperature range: -4°F to 158°F



MGV

Soft start / dump valve
1/8" to 1/2" NPT
Pressure range: 36 to 130 PSI
Temperature range: -4°F to 158°F

Grippers



Parallel Grippers with Roller Bearings

Gripper
Pressure range 15-100 PSI
depending on bore size
6, 10, 16, 20, 25, 32, 40 mm bores



Parallel Multi-Finger Grippers

Gripper
Pressure range 22-100 PSI
120 cycles per minute
16, 20, 25, 32, 40, 50, 63 mm bores



Angular Grippers

Gripper
Pressure range 15-100 PSI
depending on bore size
180 cycles per minute
6, 10, 16, 20, 25, 32 mm bores



180° Grippers

Gripper
Pressure range 21-100 PSI
60 cycles per minute
10, 16, 20, 25, 32 mm bores



online configurators available for cylinders, valves, and FRLs:
www.bimba.com



Valves

**M3V**

Inline solenoid valve
Port: 1/8" NPT
Function: 3/2
Cv: 0.051
Voltage: 12-24VDC, 24-120VAC

**M4V**

Inline solenoid valve
Port: 1/8", 1/4", 3/8", 1/2" NPT
Function: 5/2, 5/3
Cv: 0.67-2.79
Voltage: 12-24VDC, 24-120VAC

**MPS**

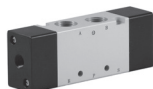
Manifold Powerstrip™
2 to 8 stations for M3V/M4V valves
Voltage: 12-24VDC, 24-120VAC
Temperature range: 0°F to 120°F

**M4M**

Inline solenoid valve
Port: 1/4" NPT
Function: 5/2
Cv: 1.40
Voltage: 12-24VDC, 24-120VAC

**M4H**

Inline mechanical valve
Port: 1/8", 1/4" NPT
Function: 5/2, 5/3
Cv: 0.67 - 1.39

**M4A**

Inline solenoid and air pilot
Port: 1/8", 1/4" NPT
Function: 5/2, 5/3
Cv: 0.78 - 2.79

**M4L**

Inline mechanical valve
Port: 1/8", 1/4" NPT
Function: 5/2
Cv: 0.78, 1.39

**M4F**

Foot pedal valve
Port: 1/4" NPT
Function: 5/2
Cv: 0.78

**MASC**

Flow control valve
Port: 1/8", 1/4", 3/8", 1/2" NPT



online configurators available for cylinders, valves, and FRLs:
www.bimba.com



Norgren Vacuum Generators



NVP Series

Modular Venturi Generators
Vacuum levels up to 29.5"Hg
Vacuum flows up to 28.0 SCFM



NJ Series

Rugged Cylindrical Generators
Vacuum levels up to 28.0"Hg
Vacuum flows up to 28.0 SCFM



NVDF Series

Variable Flow Vacuum Generators
Vacuum levels up to 25.0"Hg
Vacuum flows up to 120.0 SCFM



NCDF Series

Adjustable Air Amplifier/Blowers
Vacuum levels up to 9.0"Hg
Vacuum flows up to 330.0 SCFM



NDF Series

Material Transfer Generators
Vacuum levels up to 11.0"Hg
Vacuum flows up to 600.0 SCF



NMVS Series

Multi-stage Generators
Vacuum levels up to 28.0" Hg
Vacuum flows up to 20.0 SCFM

Norgren Vacuum Cups



Vacuum Cups

A wide range of styles, materials, and sizes

Norgren End-of-Arm-Tooling & Accessories



NCRVT

Fully integrated vacuum tool designed for collaborative robots



Custom Solutions

Custom vacuum end-of-arm tooling designs available



Spring Levelers

Mechanical compensation for uneven surfaces



Mounting Brackets

To connect spring levelers and accessories to extrusions



Manifold Blocks

For mounting vacuum cups to extrusions and/or distributing vacuum to multiple locations

Warning

Improper selection, misuse, age or malfunction of components used in systems can cause failure in various modes. The system designer is warned to consider the failure modes of all component parts and to provide adequate safeguards to prevent personal injury or damage to equipment or property in the event of such failure modes. System designers and end users are cautioned to consult instruction sheets and specifications available from the factory. The system designer/end user is responsible for verifying that all requirements for the application are met.

Warranty

The products described herein are warranted subject to seller's Standard Terms and Condition of Sale, available at seller's website.

⚠ WARNING: Cancer and Reproductive Harm - www.p65warnings.ca.gov.

Find out more





For further information,
scan this QR code or visit
www.bimba.com



Whether it's a modification to an existing product, a custom design for your application, or specific industry need, we deliver exceptional solutions.



1. Opportunity Identification

Identify potential opportunities for us to solve a customer problem through the creation of a specialty device.



2. Application Discovery

Engage with the customer to ascertain their application needs and begin preliminary talks via phone call, "Talk to an Engineer" meeting, or in-person.



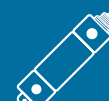
3. Design

Our design teams work with your engineers and technical support staff to understand the problem and begin creating concepts to address the customer's challenges.



4. Quote

The quoting process engages manufacturing engineers and Bimba's global procurement team to develop a cost-effective and competitively priced solution.



5. Prototype

Dedicated resources in engineering and manufacturing concentrate on prototype builds to test real-world viability, using real and simulated products.



6. Production Build

Bimba is positioned to leverage its full weight of manufacturing resources to supply production quantities in a timely fashion.

Due to our policy of continuous development, Bimba reserve the right to change specifications without prior notice.

BIM-PG-07/22

Bimba

25150 S. Governors Hwy
University Park, IL 60484

Tel: +(1) 708 534 8544

Fax: +(1) 708 235 2014

Toll Free (US): 800-44-BIMBA

Bimba is part of Norgren, a world leader in motion and fluid control technologies. Norgren operates four global centres of technical excellence and a sales and service network in 50 countries, as well as manufacturing capability in Brazil, China, Czech Republic, Germany, India, Mexico UK and the USA.

For information on all Norgren companies visit

www.norgren.com

Supported by distributors
worldwide.

