

September 2018 – Volume 19 Issue 1

RIDBA JOURNAL

The Premier Rural and Industrial Building Magazine



Perfect designed harmony,
bringing peace of mind to
your installations, see p26

P6 | P3

PROFILED SHEETING

 MarleyEternit

Thinking construction? Think Steadmans.



Clients choose Steadmans because their comprehensive product range will meet the needs of each specific project. With warranted products and back up from their reliable and knowledgeable team you get what you'll need to complete your job from one source.

Add to an extensive stock capacity, a fleet of own delivery vehicles and a capacity to meet those all-important deadlines, it's what you need when you need it. The choice is easy.

Steadmans supply solutions in:

- **Single Skin**
- **Composite panel**
- **Fibre Cement**
- **Purlins & Rails**

For construction projects as diverse as:

- **Manufacturing workshops**
- **Storage**
- **Retail & Commercial buildings**
- **Offices**
- **Tourism & leisure facilities**

For our latest literature visit:

steadmans.co.uk

enquiries@steadmans.co.uk



Part of **SG** plc

www.steadmans.co.uk



Nationwide delivery by our own fleet

Single Skin Profiles | Fibre cement | Dripstop Anti-Condensation | Purlins & Rails | Ventair
Composite Panels | Agri-Steel | Flashing & Guttering





A Word from the Editor

Image Courtesy of M.D. Anthony

Heading into a Busy Autumn

It is the time of year when the Health & Safety Executive (HSE) releases its annual figures for work-related injuries and how they are spread across the different industrial sectors. It may come as no surprise that construction and agriculture remain at the top of the list, recording the highest across the sectors, with falls from height being listed as the most common cause. The full article from HSE is on page 9. Working to reduce these figures remains a priority for RIDBA and we will continue working with our stakeholders to raise awareness and offer guidance where it is needed.

Other important industry issues, being dealt with by Build UK over the last number of months, including retentions and pre-qualification, as well as the benchmarking of its Contractor members using the data submitted under the Duty to Report on Payment Practices and Performance, can be found on page 14.

At the time of writing, there has been much in the industry press over the last month or so with regards to CE marking – in particular, the release of BS EN 1090-2:2018 and the news that audits may be changing to an annual occurrence – find out more on page 11.

We are delighted to announce the launch of the 2019 RIDBA Building Awards and we are excited to see the projects that members have been working on for the last couple of years. The winners of the Awards will be announced at a black tie dinner on Friday 15 March 2019 at the East Midlands Conference Centre in Nottingham. More about how to enter the Awards and get involved can be found in the RIDBA news on page 5.

In his latest article on pages 20-21, RIDBA Technical Consultant, Martin Heywood, looks at the widely-used RIDBA Load Tables and the dangers of using them inappropriately. Members can contact Martin on any technical query so please remember to take advantage of this service.

Since the last edition, we are delighted to welcome three new members: Hilro Consulting, Kaltenbach and Powell Construction Co. which hits our target of ten new members for the RIDBA year. You can find their details, along with all other RIDBA members, in the Member Directory shown on pages 15-19, as well as on the website.

We always welcome feedback, so please let us know if you have any comments or suggestions on how we can continue to improve RIDBA. You, the members, make RIDBA what it is, and collectively we can all work together to shape the future of the rural and industrial buildings industry.

Finally, we are keen to receive good news stories from members, which you will always find towards the back of this publication, so please keep in touch; either call on **0844 249 0043** or email **Debbie.lley@ridba.org.uk**.

Debbie lley
Trade Association Director



RIDBA News	4	Member Directory	15
Dates for your Diary	4	Technical Update	20
Industry News	7	Member News	23
Build UK News	14		

Published By:

Rural and Industrial Design and Building Association (RIDBA)
6-8 Bonhill Street, London, EC2A 4BX
Tel: 0844 249 0043
Fax: 0844 249 0045
Email: admin@ridba.org.uk
www.ridba.org.uk

Contact:
Debbie lley, Secretariat
Email: Debbie.lley@ridba.org.uk

Martin Heywood, Technical Consultant
Email: technical@ridba.org.uk

Advertising
If you would like to advertise in the RIDBA Journal:
Email: marketing@ridba.org.uk
Website: www.ridba.org.uk

Subscriptions:
Free for members of RIDBA
Non-members UK:
£20 per year, 4 issues
Non-members Overseas:
£25 per year, 4 issues.

The RIDBA Journal has been carefully prepared however, articles are published without responsibility on the part of the publishers or authors for loss occasioned to any person acting or refraining from action as a result of any view, information or advice included therein.

The articles published do not necessarily reflect the views or opinions of the Rural and Industrial Design and Building Association or its officers. Any views expressed are the author's own.

The publishers do not accept any responsibility for claims made by advertisers.

Follow RIDBA on Twitter:
@RIDBA_Office

RIDBA is a member of Build UK.
ISSN: 1473 - 835X



RIDBA News

Come Along to the Next RIDBA Members' Meeting

The next RIDBA Members' Meeting is taking place on **Wednesday 17 October** at The Redworth Hall Hotel in County Durham (DL5 6NL). There are three main topics on the agenda for the meeting: how solar heated air can be fed directly into a building's heating system; 'Designing Out Crime' by developing robust specifications; and steel fabrication management information software. There will be a networking dinner the night before on **Tuesday 16 October**, also at The Redworth Hall Hotel, costing £25 for a three-course meal.

To book your places please contact admin@ridba.org.uk.

Dates for Your Diary

9-11 October

UK Construction Week, NEC Birmingham

17 October

RIDBA Members' Meeting, The Redworth Hall Hotel, County Durham

20-21 October

Countryside Live, Great Yorkshire Showground, Harrogate

23-24 October

London Build, Olympia, London

7-8 November

Farm Business Innovation Show, NEC, Birmingham

20-21 November

Offsite Construction Show, ExCel, London

Making the Most of Your Membership

Bringing trade associations together with clients and main contractors, Build UK provides a collective voice for the contracting supply chain, offering influential and dynamic leadership, and creating the conditions for the supply chain to thrive. Through RIDBA's membership of Build UK, we have the opportunity to influence standard setting within the sector, as well as improve the contracting supply chain practices.

In addition, there are a number of useful resources and helplines available.

Self-Assessment Tax Return

Cloud-based software that calculates your tax as you go, and is designed to file an accurate self-assessment tax return online. RIDBA members get 25% off the online price.

T: 0161 413 5041

E: amanda@gosimplesoftware.co.uk

Contractual and Legal

Legal and Contractual helpline (England) offers one hour's free advice per year on construction law, contracts and dispute resolution in England and Wales.

T: 0844 249 9871

Legal and Contractual helpline (Scotland) offers thirty minutes' free advice per case on construction law, contracts and dispute resolution in Scotland.

T: 0844 249 9872

Insurance

Free advice on commercial insurance questions relating to liability or property insurance.

T: 0208 915 1022

E: info@absoluteinsurancebrokers.co.uk

Employment

Free advice on employment issues including discipline, redundancy and ill health.

T: 0844 249 9873

Health & Safety

Free advice on health and safety matters including CDM, asbestos and risk assessments.

T: 0844 249 9874

Tax and Business

Free advice on tax and business queries including CIS, insolvency and tax status.

T: 0844 249 9875

Other services include:

Credit Checks – Credit Serve

Free, unlimited credit checks for any company based in the UK or ROI.

Publications – Construction Industry

Publications 30% discount on the Construction Health & Safety Manual and the Construction Environmental Manual.

DBS Checks – Security Watchdog


A simplified online system for carrying out enhanced DBS checks for employees.

R&D Tax Credit Claims – Rift Group

30 minutes free advice and 5% discount for members to claim tax relief on money they have spent on Research & Development.

Contact admin@ridba.org.uk if you would like any more information on any of the services listed above.

RIDBA 
Rural & Industrial Design & Building Association



Last Year's Overall Winner of the RIDBA Building Awards 2017 - Shufflebottom Ltd

RIDBA News



Introducing the RIDBA Building Awards – Showcasing the Best in Rural and Industrial Buildings

The RIDBA Building Awards are the only Awards that recognise the very best in rural and industrial buildings.

The competition runs from September to November and thereafter a selection of projects are short-listed in the categories highlighted below. In March 2019, the winners will be announced at an Awards Ceremony taking place at the East Midlands Conference Centre in Nottingham. A range of criteria, also listed below, are taken into consideration by the independent judging panel.

What the Awards are about

The Awards, which started in 2013 and take place every two years, aim to recognise and reward companies for demonstrating excellence within their industry. The Awards are open exclusively to RIDBA Members and suppliers, architects and specifiers working with RIDBA Members.

The competition aims to cover the full spectrum of the industry that RIDBA represents and entries will therefore be accepted in the following categories:

Rural – Cattle, Equestrian, Captive (zoo) and Domestic

Industrial – Light, Medium or Large

Other – Retail, Manufacturing, Leisure, Education and MOD

Training Award – Schemes /Projects or Managers and Apprentices

Depending on the entries we receive, the categories may be broken down further.

Sponsorship opportunities

It is anticipated that over 100 guests from across the supply chain will attend the event, offering an excellent opportunity to be associated with best practice in the sector

and raise your profile amongst the key players in the industry, including clients, contractors, material suppliers and service providers.

Sponsorship of the RIDBA Building Awards is also a great way to gain recognition amongst decision makers and experts in your sector. There are different packages available. Please contact us at marketing@ridba.org.uk for more information.

Rules of entry

- The RIDBA Building Awards are free to enter.
- All entries must be received by RIDBA by Friday 9 November 2018 at 5:00pm. Entries received after this date will not be considered.
- Entries must contain all information as set out on the online Awards form.
- Entries should be submitted online or in the post.
- There is no limit on the number of entries but a separate form must be used for each individual entry.
- The Awards are open to RIDBA members only or those working with one.
- Projects must be in the UK or the Republic of Ireland.
- Projects should have been completed between December 2016 and November 2018.
- Projects must have the approval of all parties involved in the project including the building owner if required.
- Projects previously entered for the RIDBA (formerly FAB) Awards will not be considered.

For full details please see the Entry Form that has been issued to all members. If you have not received an Entry Form please contact admin@ridba.org.uk.

Last Year's Successes

One of last year's most successful entries was submitted by Shufflebottom Ltd with the CUBRIC Building in Cardiff (shown above) which picked up awards for Overall Winner as well as the Education and Research category.

Why enter

- Secure a competitive edge over your peers
- Be recognised for your outstanding work
- Get free PR in industry newsletters and publications
- Benchmark your work against your competitors
- Raise your company profile.

Criteria for Entry

When submitting your entry, although they will not apply to all projects, we recommend that you take the following criteria into consideration:

- Degree of Difficulty (complexity of details)
- Workmanship
- Problem-solving (e.g. coping with constraints)
- Contribution to the Built Environment (value to the local area)
- Environmental Qualities (e.g. conservation of heat/power, use of natural light, "green" materials, reclaimed or locally sourced materials)
- Aesthetics (visual impact, appearance)
- Meeting Targets (e.g. finished to budget and on time).



**Not just galvanizing,
but Joseph Ash Galvanizing!**

**Eight UK Divisions, all offering...
Premium quality
Technical expertise**

(with acknowledgements to Roundhouse Building Solutions)

sales@josephash.co.uk

www.josephash.co.uk

01922 628141

UltraZED™ Purlin. Stronger, Lighter, Greener.



DesignSuite Pro

Hadley UltraZED™ is easily selected via our DesignSuite Pro software. Intuitive, customisable and boasting a wealth of innovative features, DesignSuite Pro makes project planning and specifying easier than ever before.



Our UltraZED™ purlin and side rail system features a host of refinements designed to make life easier for structural engineers and fabricators responsible for roofing and side cladding projects. Key benefits include greater load bearing capacity, enhanced air permeability within a building and significant advances in sustainability too.

www.hadleygroup.com



SHAPING THE FUTURE IN METAL



Industry News

How to Implement the Correct PPE for Your Agriculture Business

It's a sobering fact that the agricultural sector represents only 1.8% of the UK workforce, but accounts for approximately 19% of reported fatalities every year — and the number of workers who lose their livelihoods to injuries and illnesses caused by farm work is higher still.

Farming is always going to involve an element of risk. The good news is that there are precautions that can be taken to help minimise the risk of an accident or injury, and this is where Personal Protective Equipment (PPE) comes in.

Basic PPE for everyday farming tasks

In the course of everyday work, farmers and their employees are exposed to a number of different hazards. So, all farm staff should have a few basic pieces of PPE on hand at all times, including: **reinforced boots or wellies, cut resistant gloves, hardhats and helmets, safety harnesses, hearing protection.**

All of this PPE is likely to be required on a daily basis, so it should be kept somewhere easy to access and monitored regularly to check it's still fit for purpose.

PPE for dangerous agricultural chemicals

Pesticides, fertilisers, and disinfecting chemicals are all everyday items in a farm environment, but they can still be dangerous products when used without the right PPE. To protect workers' skin, eyes and lungs when spraying, applying, and handling these chemicals, employers need to provide:

- **Safety glasses or goggles:** Goggles will be needed if there is chance that drifting clouds of vapour will reach the eyes.
- **Respirator mask:** The correct breathing mask will stop gases, vapours and dusts from damaging the lungs and throat.
- **Chemically resistant gloves, boots and overalls**

Remember that vapours, dusts and fumes may drift considerable distances, so all staff working near potentially dangerous substances will need some form of protection.

Provide proper training

Lastly, it's essential that everyone on the farm understands their responsibilities and what they need to do to keep themselves and others safe.

It's no good supplying your staff with PPE unless they're well-versed in how to use, store, and monitor it correctly, so you should be sure to give them the right training.

Workers should know how to check their PPE for faults and damage, and they should understand exactly what to do if they discover a problem with their equipment. They should also know how to carry out some basic maintenance on their gear: like how to replace the cartridges in their respirators, for instance.

Article sourced from www.farminguk.com.

Farmer Confidence Drops Significantly Post-Brexit

With less than seven months to go before Britain leaves the EU, a survey of Yorkshire's farm and agri-food businesses shows a current positive outlook is set to fall significantly.

The survey, carried out by the NFU in the North East, shows that while 71% of farmer respondents and 82% of food, drink and wider supply chain companies surveyed are very or fairly positive about their business prospects, this drops to just 37% and 51% respectively once outside the EU.

Asked to indicate the key issues affecting their confidence, 49% of farmer respondents said their most pressing issues were related to uncertainty and volatility - in terms of business costs and farmgate prices.

Resilience

The survey also asked respondents whether they have changed anything to make their business more resilient ahead of Brexit.

39% of farmer respondents have taken steps and of those, 31% have worked to reduce costs/debt, 23% have diversified their business and 17% have changed their farming practices in some way.

'Stumbling block'

Adam Bedford, NFU North East regional director said it is "encouraging" to see a proportion of Yorkshire's farming businesses taking steps to make themselves more resilient in the face of change.

"But the point was made by most that continued uncertainty is a real stumbling block to effective decision making," he said.

"Current productivity grants delivered through the Rural Development Programme for England (RDPE), whilst beset with problems such as launch delays and a recognised underspend, are now starting to deliver benefits for farm businesses"

"We would like to see these schemes continued through the transition to help support micro and small businesses, farm diversifications and to boost farm productivity."

Article sourced from www.farminguk.com.



Industry News

New Clean Air Strategy has been launched by Environment Secretary Michael Gove

The Environment Secretary Michael Gove has published a Clean Air Strategy which aims to cut air pollution and save lives, backed up through new primary legislation.

Air pollution is the fourth biggest threat to public health after cancer, obesity and heart disease and the new government strategy sets out how we will go further and faster than the EU in reducing human exposure to particulate matter pollution. These proposals are in addition to the government's £3.5 billion plan to reduce air pollution from road transport and diesel vehicles, set out in July last year.

It is estimated that the action set out will reduce the costs of air pollution to society by an estimated £1 billion every year by 2020, rising to £2.5 billion every year from 2030.

The new strategy, which is now out for consultation, is a key part of our 25 Year Plan to leave our environment in a better state than we found it. It sets out:

- Our goal that by 2025, we will halve the number of people living in locations where concentrations of particulate matter are above the WHO guideline limit of 10 ug/m3.
- We will introduce new primary legislation, which will give local government new powers to improve air quality.
- We will legislate to ensure only the cleanest domestic fuels will be available for sale, preventing 8,000 tonnes of harmful particulate matter from entering the atmosphere each year.

- For the first time the government will take concerted action to tackle ammonia from farming – which is responsible for 88% of ammonia emissions – by requiring farmers to invest in the infrastructure and equipment that will reduce emissions. Farmers will be supported to achieve this through our new system of public money for public goods.

Environment Secretary Michael Gove said: 'Air quality has improved significantly since 2010 but sixty years on from the historic Clean Air Act a clear truth remains - air pollution is making people ill, shortening lives and damaging our economy and environment.'

This is why we are launching this clean air strategy, backed up with new primary legislation. It sets out the comprehensive action required across all parts of government to improve air quality. The strategy also sets out how we will work with media outlets to improve public access to the air quality forecast and help individuals and organisations reduce their contribution to air pollution; showing how this can help them protect their families, colleagues and neighbours.'

Mr Gove added: 'Government cannot act alone in tackling air pollution. Our strategy sets out how we will work with businesses, farmers, industry and households to develop innovative new solutions to reduce emissions. It also highlights how we can all take action and play an important role in cleaning up our air.'

Article from www.gov.uk.

New Guide for Farmers to Help Reduce Ammonia Air Pollution

As reported above, agriculture is responsible for 88% of UK emissions of ammonia gas and a new guide has been produced, designed to help farmers, advisors and contractors improve air quality. The Code of Good Agricultural Practice for Reducing Ammonia Emissions sets out simple steps all farmers can take to reduce ammonia emissions, such as using a nutrient management plan to calculate fertiliser application rates.

Environment Minister Thérèse Coffey said: 'Air pollution is not just an urban issue and ... with clear new guidance and financial support we will help farmers across the country to take action, reduce emissions and help improve air quality.'

The voluntary code has been written by Defra in collaboration with the National Farmers Union (NFU), the Agriculture and Horticulture Development Board (AHDB) and the Agricultural Industries

Confederation. It includes information on how to reduce emissions when: **Storing organic manure, applying organic manure, applying manufactured nitrogen fertiliser, feeding livestock, housing livestock.**

Nigel Penlington, Head of Environment and Buildings at the Agriculture and Horticulture Development Board said: 'There is increasing pressure on farmers to control ammonia so we welcome this as a first step to help raise awareness and provide simple, practical steps to make a difference on the farm, improve the image of farming and its environmental performance and, at the same time, save farmers money and provide some benefits to the health and welfare of livestock and crop health.'

Article sourced from www.gov.uk.



Industry News

HSE Releases Annual Workplace Fatality Figures

The Health and Safety Executive (HSE) has recently released its annual figures for work-related fatal injuries for 2017/18, as well as the number of people known to have died from the asbestos-related cancer, mesothelioma, in 2016.

The provisional annual data for work-related fatal injuries revealed that 144 workers were fatally injured between April 2017 and March 2018 (a rate of 0.45 per 100,000 workers).

Although this represents an increase of nine fatalities from 2016/17, there has been a long-term reduction in the number of fatalities since 1981 and the number has remained broadly level in recent years.

HSE Chair Martin Temple said: "Despite the fact that Britain's health and safety record is the envy of much of the world, the increase in the number of workers fatally injured is clearly a source of concern. Published in the same week as the 30th anniversary of the Piper Alpha disaster, the figures serve as a reminder of why health and safety is so important and that we must not become complacent as we continue on our mission to prevent all forms of injury, death and ill health at work."

The new figures show how fatal injuries are spread across the different industrial sectors:

- 38 fatal injuries to **construction** workers were recorded, accounting for the largest share of any industry. The annual average rate over the last five years in construction is around four times as high as the all industry rate.
- 29 fatal injuries to **agricultural** workers were recorded. This sector continues to account for a large share of the annual fatality count.

It has the highest rate of fatal injury of all the main industry sectors, around 18 times as high as the all industry rate.

- 12 fatal injuries to waste and recycling workers were recorded. Despite being a relatively small sector in terms of employment, the annual average fatal injury rate over the last five years is around 16 times as high as the all industry rate.
- 15 fatal injuries were recorded in both the manufacturing and the transport and storage sectors. Both industries have an annual average rate of fatal injury around 1.5 – 2 times the rate across all industries over the last five years.

The three most common causes of fatal injuries continue to be due to: workers falling from height (35), being struck by a moving vehicle (26) and being struck by a moving object (23), accounting for nearly 60 per cent of fatal injuries in 2017/18.

The new figures also highlight the risks to older workers; 40 per cent of fatal injuries in 2017/18 were to workers aged 60 or over, even though such workers made up only around 10 per cent of the workforce.

Mesothelioma, contracted through past exposure to asbestos and one of the few work-related diseases where deaths can be counted directly, killed 2,595 in Great Britain in 2016. The current figures are largely a consequence of occupational asbestos exposures that occurred before 1980. Annual deaths are expected to remain broadly at current levels for the rest of the decade before beginning to decline.

Article sourced from <http://press.hse.gov.uk>.

More Needs to be Done to Protect Workers' Lives

Following the figures recently released from HSE, as shown in the article above, the British Safety Council pledges to campaign more vigorously for safe and healthy workplaces.

'This increase in workplace deaths may be the first sign of the effect of years of budget austerity, although the government cuts to health and safety investment have been taking a while to impact on workers', said Lawrence Waterman, Chairman of the British Safety Council.

He continued: 'Every workplace death is a tragedy for the person and their families, friends and workmates. The latest rise in deaths at work reported by the HSE undermines the complacent belief that 'we have the best safety record in the world' and raises questions about the hollowing out of the HSE's and local authorities' ability to inspect workplaces.'

Lawrence Waterman added: The pronouncements about mental health haven't been matched by action. That is why Mates in Mind and similar initiatives are crucial to encourage employers, workers and their trade unions to take practical steps to reduce the causes of mental ill health at work and respond appropriately when it does arise (see more on page 13).

'The government is in a state of Brexit paralysis, which is why it is essential that the British Safety Council joins forces with other organisations to achieve our vision of work that doesn't kill, injure or harm anyone but instead enhances their wellbeing. The fatal accident statistics are a real disappointment after years of improving our performance in the UK.'

Article sourced from www.ukconstructionmedia.co.uk.



Industry News

How Software Technology Can Give Your Steel Fabrication Company A Competitive Edge

Steel fabrication best practices in the 21st Century call for the utilisation of dedicated software to stay ahead of the fabrication curve and remain both relevant and profitable in an ever more dynamic industry. The use of dedicated software programs has a clear upward trend according to numerous sources of research, for steel fabricators this is due to the benefits it provides and the need to remain competitive while being profitable.

The HM Government released Construction 2025 in 2013 which outlines the need to lower construction costs by 33% and reduce project completion time by 50%. It is heavily suggested that this can be achieved through the usage of BIM (Building Information Modelling) and MRP (Material Resource Planning) software solutions. This is because of the time and cost savings they can provide via a multitude of features.

For example, STRUMIS material nesting can create a 2% saving on steel expenditure, or more. A company fabricating 50 tonnes of steel per week could have a saving of £36,400 each year.

In addition to the Construction 2025 statements, software can also ensure that your company adheres to policies such as CE Marking,

BS EN 1090 and ISO accreditation. Complete project traceability is more essential than ever to ensure that your business is fully protected. The implementation of MRP software provides this, for example STRUMIS can enable steel fabricators to achieve execution class level 4. This is enabled via total traceability on steel cast references, test certificates, off-cuts, labour and man hours, any part or assembly lifecycle route and project cost monitoring.

To summarise, BIM and MRP software solutions are able to streamline and simplify all of your steel fabrication projects and resources. Reduce errors and increase productivity, with the added confidence of full traceability.

Eliminating the need to re-enter data while addressing every process in the fabrication and manufacturing chain, freeing up staff to concentrate on what they do best. All whilst saving you time and money.

For further information on the many time and cost saving benefits BIM and MRP software solutions provide please visit www.strumis.com.

CLOCS Launches New Website

About CLOCS

Since the launch of the Construction Logistics and Cyclist Safety (CLOCS) Standard in December 2013, the construction industry has opted to take ownership of work related road risk beyond legal requirements. A wide range of construction clients, principal contractors and fleet operators have openly committed to implement and adhere to the requirements of the CLOCS Standard by signing a Memorandum of Understanding. A supply chain comprised of CLOCS Champions means that clients, contractors and the vehicle operators are working together to minimise risk to vulnerable road users.

CLOCS Standard

The national CLOCS Standard aims to eliminate risk of a collision between heavy goods vehicles servicing the construction sector and vulnerable road users by ensuring effective practice in the management of operations, vehicles, drivers and construction sites. It is a voluntary standard that promotes good practice beyond basic legal compliance. It

provides a framework with clear roles and responsibilities to protect the wider community, the supply chain, employees and their reputation.

New Website

CLOCS has recently launched a new website which has been specifically designed to help everyone involved in CLOCS to understand their roles and responsibilities when implementing the CLOCS Standard.

The website also includes a new Directory of champions so that you can quickly identify organisations committed to the CLOCS Standard. CLOCS represents a diverse group of stakeholders so they have created individual pages for each group to help champions understand how they can build their own business case for implementation. The business case pages give headline benefits and explain the specific requirements of the CLOCS Standard relevant to that role.

You can view the new website www.clocs.org.uk and register to become a CLOCS champion.



Industry News

Image Courtesy of A. C. Bacon Engineering

Execution of Steel Structures – New Standard Released



BSI, the business standards company, has published BS EN 1090-2:2018 Execution of steel structures and aluminium structures. Technical requirements for steel structures.

This European Standard specifies requirements for execution of steel structures, in order to ensure adequate levels of mechanical resistance and stability, serviceability and durability. As part two of a five part standard, the revised BS EN 1090-2 specifies requirements for execution of structural steelwork as structures or as manufactured components, produced from:

- Hot rolled, structural steel products up to and including grade S700
- Cold formed components and sheeting up to and including grade S700 (unless coming within the scope of BS EN 1090-4)
- Hot finished or cold formed austenitic, austenitic-ferritic and ferritic stainless steel products
- Hot finished or cold-formed structural hollow sections, including standard range and custom-made rolled products and hollow sections manufactured by welding.

The main changes in the 2018 version of the standard over its predecessor are as follows:

1. Technical requirements for cold-formed structural steel elements, members and sheeting and cold-formed steel structures for roof, ceiling, floor, wall, and cladding applications have been removed from this Part of the BS EN 1090 series, as they are given in EN 1090-4
2. Informative Annex B giving guidance for the determination of execution class has been removed as normative requirements for the selection of execution class are now included in of BS EN 1993-1-1:2005/A1:2014, Annex C
3. A new informative Annex D has been included giving guidance on a procedure for checking the capability of thermal cutting processes
4. A new informative Annex I has been included giving guidance on determination of the loss of preload from thick coatings on contact surfaces in preloaded connections
5. Normative Annex J "Use of compressible washer-type direct tension indicators" has been removed
6. A new informative Annex L has been included giving guidance on the selection of weld inspection classes.

Dr David Moore, Director of Engineering at the British Constructional Steelwork Association, said: "Execution classes from BS EN 1090-2 are used by steelwork contractors to put in place a set of manufacturing process controls that form part of a certified factory production control system for CE-marking fabricated steelwork. They offer a common approach to selecting the right level of quality and assurance controls needed to ensure the structure meets the engineer's design assumptions."

10% discount for RIDBA Members

RIDBA continues to work closely with Notified Body, Exova BM Trada, who has offered members a **10% discount on the full price** via their online bookshop by entering promotional code EBMT2018 at the shopping cart stage, which is valid until January 2019.

The bookshop can be contacted on **01494 569602** or **email** bmtradagroupbookshop@bmtradagroup.com if there are any queries.



CE Audits – Will They Become Annual Audits?

As you may be aware, there is a proposal by Sector Group 17 (the European Technical Group responsible for EN 1090) for the surveillance audit frequency to change to annual instead of the frequency given in EN 1090-1 (1-2-3-3). A Position Paper has been submitted to the CEN Technical Committee for approval and more information will be provided to members when it becomes available.



STEEL FABRICATORS **SAVE TIME AND MONEY** ON ALL OF YOUR PROJECTS

WORLD LEADING STEEL FABRICATION
MANAGEMENT INFORMATION SOFTWARE,
USED WORLDWIDE TO **REDUCE COSTS**
WHILE **MAXIMISING PRODUCTIVITY**
AND **INCREASING PROFITABILITY.**

IMPLEMENTING STRUMIS WILL:

- SAVE YOU TIME
- SAVE YOU MONEY
- REDUCE ERRORS
- PROVIDE TRACEABILITY
- IMPROVE PRODUCTIVITY
- ENHANCE EFFICIENCY
- INCREASE PROFITABILITY

COME SEE THE STRUMIS FEATURES THAT OTHER
PROVIDERS ARE ONLY TALKING ABOUT.
OTHERS PROMISE; WE DELIVER.

THE FUTURE OF STEEL FABRICATION.

Stay connected to STRUMIS:    



**BRINGING
STRUCTURE
TO STEEL**

SALES@STRUMIS.COM | 01332 545800 | WWW.STRUMIS.COM

SOFTWARE BY STRUMIS LTD. PART OF THE GLOBAL RDS GROUP



Industry News

Another Angle to Improving Farm Buildings

Firstly, I would like to introduce the Environment and Buildings Team at the Agriculture & Horticulture Development Board (AHDB). We are a team of four in the Technical division of AHDB, we were formed less than a year ago, as AHDB recognised the need to provide technical resources to our levy payers on matters associated with environmental protection and farm buildings. We carry out work with farmers and stakeholders including Defra, the Environment Agency, building suppliers and universities.

Our aim is to bring our knowledge and experience to a wider audience, helping the agricultural industry become more competitive and resilient in the years to come.

Defra's recent consultation on its 25 Year Environment Plan signalled change is afoot. We await the outcome in the form of new policy where agriculture will be expected to deliver public good, including food and environmental protection. This consultation document outlined a large number of commitments our Government has signed up to, some are national, like the 'Low Carbon Transition Plan', focused on slashing greenhouse gases, or international, including limiting transboundary movement of gases including ammonia.

As building designers and suppliers, members of RIDBA are aware of ammonia gas from manures and slurries needing to be removed by ventilation, but unless you have encountered challenges over its impact on wildlife and habitats during planning or permitting stages, it has been of little concern.

That is all changing. AHDB has just responded to another Defra consultation, the 'Clean Air Strategy' (see page 8). This focuses

on public health and protecting the natural environment. The Agriculture section majored on ammonia as our sector is the largest emitter at 80 per cent. The Government has made an international commitment to cut emissions by 16 per cent by 2030 compared to 2005, with an interim step of eight per cent by 2020.

So why the concern? Ammonia in the atmosphere reacts with other gases, particularly nitrous oxides to create fine particulates. These particulates contribute to poor air quality resulting in effects such as increased levels of asthma, currently a hot news topic.

So what are we doing? We have been helping pig producers facing challenges over ammonia emissions since 2007 when Environmental Permitting came in, which means much new building stock is already considered to be applying Best Available Techniques (BAT) in a European context.

Cattle housing we know less about as it is not permitted, (it's been proposed, but that's another topic). There's no European agreed BAT, although some countries have done research and developed rules and regulations, so we have been on a fact-finding mission.

We attended a study tour to visit four dairy farms and the Dairy Campus at Leuwarden in the Netherlands to look at developments in low emissions flooring. We learnt the science of urine puddle evaporation, and saw added benefits such as lower labour and improvements in cows' feet and mobility. We will be reporting on this trip in more detail and producing a guidance document.

See ahdb.org.uk for more information.

Mental Health Survey: Firms 'starting to break the stigma'

CN's latest research into the state of the industry's mental health revealed that, while 67 per cent of the workforce said awareness of mental health had improved over the past year, little improvement has been made in key areas compared with last year's findings. Skanska UK CEO, President Gregor Craig, said it was "not surprising" that the statistics had not changed overall and that "changing perceptions around mental health will take time".

An area of concern highlighted in this year's survey was the mental health of those working at smaller companies employing fewer than 100 people. Poor mental health is especially prevalent among these smaller firms, with 65 per cent of these respondents stating they had experienced mental health issues. This is significantly higher than the 56 per cent recorded the previous year.

Furthermore, a high proportion of the industry's younger workforce said they were struggling with poor mental health. More than two-thirds (68 per cent) of graduates and junior members of staff said they had experienced mental health issues (up from 64 per cent last year).

Balfour Beatty health, safety, environment and sustainability director Heather Bryant, who is also a trustee of industry mental health charity Mates in Mind, said that, while it was "encouraging" that mental health awareness had improved, the results showed "how much more there is still to do".

Article sourced from www.constructionnews.co.uk.



Build UK News



Reforming Pre-Qualification

Build UK and CECA are aiming to reduce bureaucracy in the pre-qualification system by establishing a single assessment standard for stage 1 (business assurance). Businesses will be assessed once a year, by an approved accreditation body, against the industry-agreed 'Common Assessment Standard'. This accreditation would be accepted by Clients and Contractors.

Specified within the Construction Sector Deal, industry has committed to 'developing a standardised cross-industry pre-qualification process and Pre-Qualification Questionnaire that can be adopted across the public and private sectors'.

At the end of July, Build UK launched a pilot scheme designed to ensure the Common Assessment Standard is fit for purpose before it is rolled out across the industry. 20 Build UK and CECA member companies completed the question set, including RIDBA member, Shufflebottom, which was audited by three leading accreditation bodies.

The Common Assessment Standard comprises a question set based on existing pre-qualification questionnaires, including PAS 91, and desktop and site-based assessment standards. The pilot scheme concluded in September and the final revisions made to the Common Assessment Standard will be consulted with members during October, concluding in November and an Interim Cross Industry Body will be appointed.

The final Common Assessment Standard will be published in early 2019 and further updates will be available on builduk.org.

Open Doors 2019

Open Doors 2019, a campaign that sees live construction sites and offices open their doors for the public to enjoy a unique chance to see behind the scenes, will run from Monday 18 March – Saturday 23 March 2019.

The campaign, which is led by Build UK in partnership with the Construction Industry Training Board (CITB), aims to inspire young people and career changers to consider and explore a dynamic and exciting career in the construction industry. It is also supported by the Construction Skills Certification Scheme (CSCS), Considerate Constructors Scheme (CCS) and media partner Construction News.

Members from across the construction supply chain are encouraged to participate by registering their projects, offices and training on the Open Doors website from Monday 5 November, ahead of visitor bookings which will open in January 2019.

To find out how to register your site, please visit www.opendoors.construction.

Members Benchmarked on Payment Performance

In July, Build UK published information on the payment performance of its Contractor members using data submitted under the Duty to Report on Payment Practices and Performance.

Build UK members collectively agreed for Build UK to benchmark them on both the average time they take to pay invoices and the percentage of their invoices paid beyond terms.

The Duty to Report, which requires all large companies to report on their payment practices every six months, has enabled Build UK to present a clear and comprehensive picture of payment within construction for the first time. This helps the supply chain to make more informed decisions, encourages good practice and demonstrates real commitment to addressing this long-standing issue.

The Government welcomed the move with Minister for Implementation Oliver Dowden CBE MP saying that "Government is leading by example in fair payment practices. All public sector

organisations are required to pay undisputed invoices in 30 days and ensure this payment term is passed down the supply chain.

"Build UK is leading the industry by publishing its members' payment performance. I hope to see more of these initiatives being led by industry to help us drive a positive change in culture and help eliminate poor payment practices."

Build UK Chief Executive Suzannah Nichol MBE commented that "The creation of Build UK offered the industry the opportunity to sit around the same table and work together to tackle the issue of payment, which continues to hold the industry back from realising its true potential. Transparency is essential to changing the industry culture around payment and the Duty to Report has provided a consistent means of comparing performance. This bold first step by Build UK and its members shows that the leaders within the sector are serious about changing the way they do business."

Member Directory

Frame Manufacturers

Companies that manufacture steel or timber framed buildings

3b Construction

South Street Depot, Port William, Newton Stewart,
Dumfries & Galloway, DG8 9SH
01988 700 000
heather.vance@3bconstruction.co.uk
www.3bconstruction.co.uk

A.C. Bacon Engineering Ltd

Norwich Road, Hingham, Norfolk, NR9 4LS
01953 850 611
steel@acbacon.co.uk
www.acbacon.co.uk

A C Jackson Ltd

Buffer Depot, Rode Street, Tarporley,
Cheshire, CW6 0EF
01270 588 841
info@acjackson.co.uk
www.acjacksonltd.co.uk

A.J. Lowther & Son Ltd

The Factory, Whitchurch, Ross-on-Wye,
Herefordshire, HR9 6DW
01600 890 482
info@ajlowther.co.uk
www.ajlowther.co.uk

A. J. W. Engineering Ltd

The Grange, Fleetham Lane, Scruton,
Northallerton, DL7 0RL
07966 406 271
ajw.engineering@virgin.net

Adelad Cladding Ltd

The Stores, Station Road, Llanwrda,
Carmarthenshire, SA19 8EH
01550 777 497
adclad@live.co.uk
www.adclad.co.uk

AJ Hayton Welding & Fabrication Ltd

Bainsbeck Barn, Arkholme, Nr Carnforth,
Lancashire, LA6 1BA
01524 222242
email@ajhayton.plus.com

Alan Jukes Steel Framed Buildings Ltd

Cae Mawr, Llanfechain, Powys, SY22 6XH
01691 828 094
alanjukes@btinternet.com
www.alanjukes.co.uk

Allen Fabrications Ltd

Davies Road, Four Pools Industrial Estate,
Evesham, Worcestershire, WR11 1DR
01386 47277
info@allenfabs.co.uk
www.allenfabs.co.uk

Andenor Ltd

74 Rowan Way, Balderton, Nottinghamshire,
Newark, NG24 3BJ
01623 490555
stuart@andenor.com

Balsham (Buildings) Ltd

1-2 Rosemary House, Lanwades Business Park,
Kennet, Newmarket, Suffolk, CB8 7PN
01223 894 404
mickg@balsham.uk.com
www.balsham.uk.com

Bowie Lockwood Structures Ltd

Coombe Abbey Farm, Coombe Fields Road, Binley,
Warwickshire, CV3 2SX
0845 2572 343
sales@bowielockwood.co.uk
www.bowielockwood.co.uk

C.E. Davidson Ltd

South View, Fressingfield, Eye, Suffolk, IP21 5PJ
01379 388 077
charlie@cedavidson.co.uk

Chris Hodgson Engineering Ltd

Seven Acres, Hollocombe, Chulmleigh, Devon,
EX18 7QH
01769 520 422
info@chrishodgson.biz
www.chrishodgsonengineering.co.uk

Colley (Farm Buildings) Ltd

The Airfield, Cranswick Ind Est, Beverley Road
Cranswick, Driffield, Yorkshire, YO25 9PF
01430 810 210
enquiries@colleyfarmbuildings.co.uk
www.colleyfarmbuildings.co.uk

Collins Design & Build Ltd

Unit 5, Westwood Ind Est, Pontrilas, Hereford,
HR2 0EL
01981 240 682
info@collinsdb.co.uk
www.collinsdb.co.uk

Core Steel Ltd

Unit J, Three Mills Trading Estate, Old School Lane,
Hereford, HR1 1EX
01273 815 932
info@danddconstruction.co.uk
www.danddconstruction.co.uk

Culm Valley Farm & Industrial Buildings Ltd

Bridge Street, Bridge Works, Uffculme, Devon,
EX15 3AX
01884 841 557
culmvalleyfarmbuildings@btconnect.com
www.culmvalleyfarmbuildings.co.uk

Cumbria Steel Fabrications Ltd

Barras Lane Ind Est, Dalston, Carlisle, Cumbria,
CA5 7ND
01228 711 318
office@csfab.co.uk
www.csfab.co.uk

D G Ashley Ltd

Highcroft, Aike, Driffield, East Yorkshire,
YO25 9BG
01377 270 525
D6ash@aol.com

D Jones Welding

Llwynceilyn, Llandeilo, Carmarthenshire, SA19 6RY
01558 822 381
djoneswelding@hotmail.co.uk

DeVile and Lear Ltd

Mill Lane, Roston, Ashbourne, Derbyshire,
DE6 2EE
01335 324 302
info@devilleandlear.co.uk
www.devilleandlear.co.uk

Dunn (Canadian - UK) Ltd

86 Spencer Road, Wigan, Lancashire, WN1 2QP
01942 237 487
dunnstorm650@aol.com
www.dunncanadian.co.uk

Eagle Structural Ltd

Lordship Road, South Carlton, Louth, Lincolnshire,
LN11 8JS
01507 450 081
info@eagle-structural.co.uk
www.eagle-structural.co.uk

Emmerson Doors Ltd

Enterprise Way, Sherburn in Elmet, Leeds,
LS25 6NA
01977 685 566
sales@emmerson-doors.co.uk
www.emmerson-doors.co.uk

Ernest Leng and Son

Friars Hill, Sinnington, York, Yorkshire, YO62 6SL
01751 431 774
leng@xlninternet.co.uk
www.ernestleng.co.uk

F.W. Yelland & Son (Northlew) Ltd

Oljonna House, Station Road, Okehampton,
Devon, EX20 3BN
01409 221 445
admin@yellands.free-online.co.uk
www.yelland-construction.co.uk

Farmplus Constructions Ltd

Shay Lane, Longridge, Preston, Lancashire,
PR3 3BT
01772 785 252
jim.rogerson@farmplus.co.uk
www.farmplus.co.uk

Fowler & Gilbert Ltd

Unit B Sheriff House, Nantwich Road, Stanthorne,
Middlewich, Cheshire, CW10 0LH
01606 738 738
info@flgb.co.uk
www.flgb.co.uk

FP McCann Ltd

3 Drumard Road, Knockloughrim, Magherafelt,
Londonderry, BT45 8QA
028 79642558
info@fpmccann.co.uk
www.fpmccann.co.uk

Gareth Pugh Steel Framed Buildings Ltd

Agrimont Depot Station Yard, Abermule, Powys,
Montgomery, SY15 6NH
01686 630500
gareth.pugh@garethpugh.co.uk
www.garethpugh.co.uk

George W Addison

Clayfolds, Aluah, Banff, Aberdeenshire,
AB45 3UD
01261 821 288
stuartadd@btinternet.com

GLE Structurals Ltd

6A Station Street, Chatteris, Cambridgeshire,
PE16 6NA
07711 032 600
mark.stone16@btinternet.com

Glendale Engineering (Milfield) Ltd

Berwick Road Industrial Estate, Wooler,
Northumberland, NE71 6AH
01668 281 464
info@glendaleengineering.co.uk
www.glendaleengineering.co.uk

GLT & Son Roofing Services Ltd

15a Bronglyn, Bronwydd, Carmarthen,
SA33 6JB
07837 958 144
gltroof@gmail.com

Harry West (Prees)

Lower Heath Prees, Whitchurch, Shropshire,
SY13 2BT
01948 840465
lee.west@harrywest.co.uk
www.harrywest.co.uk

Hemmings Construction Ltd

Cockshoot Farm, Dean Road, Newnham,
Gloucestershire, GL14 1HH
01594 517 161
martin.hemmings@yahoo.co.uk

Hext Construction Ltd

Broadsmoor, Crediton, Devon,
EX17 4SW
01884 860 555
hextconstruction@gmail.com

IN Fabrications Ltd

Unit 11, Talbot Way, Adderley Road Industrial Estate, Market Drayton, Shropshire, TF9 3SJ
ian@infabrications.co.uk

J I & M Davies & Son

Coed Rodyn Farm, Lixwm Road, Mold, Clwyd, CH7 5RQ
01352 741 843
daviescoed@aol.com

J. Wareing & Son (Wrea Green) Ltd

Whinbrick Works, Blackpool Road, Kirkham, Preston, Lancashire, PR4 2RJ
01772 682 159
sales@wareingbuildings.co.uk
www.wareingbuildings.co.uk

Knapp Farm Buildings

Quarryknowe, Knapp, Inchtute, Perthshire, PH14 9SW
01828 686 265
alistairreid@knappfarmbuildings.co.uk
www.knappfarmbuildings.co.uk

L Harrison & Co. (Eastoft) Ltd

Verandah House, Eastoft, Scunthorpe, North Lincolnshire, DN17 4PN
01724 798245
andy@harrisoneastoft.co.uk

Lancashire Steel Buildings

Cophurst Farm, Barrowford Road, Higham, Nr Burnley, Lancashire, BB12 9AS
01282 771748
sales@lancashire-steelbuildings.co.uk
http://lancashire-steelbuildings.co.uk/

M.D. Anthony Ltd

Unit 20, The Dock Business Park, Ely, Cambridgeshire, CB7 4GS
01353 666 201
sales@mdanthony.com
www.mdanthony.com

Magna Buildings Ltd

Blackpitt Farm, Oddington, Moreton in Marsh, Gloucestershire, GL56 0XW
01451 831 855
general@magnabuild.com
www.magnabuild.co.uk

Mervyn Rose Engineering Ltd T/A Rose Engineering

Paradise Farm, Bagber, Sturminster Newton, Dorset, DT10 2HB
01258 472 866
info@rose-engineering.co.uk
www.rose-engineering.co.uk

Minshall Construction (UK) Ltd

Unit 1 Bert Smith Way, Adderley Road, Market Drayton, Shropshire, TF9 3SN
01630 657 647
info@minshallconstruction.com
www.minshallconstruction.com

Morspan Construction Ltd

Llancayo Farm, Usk, Monmouthshire, NP15 1HY
01291 672334
enquiries@morspan.co.uk
www.morspan.com

Norman & Gray Ltd

Lilac Cottage, Malton Road, Pickering, North Yorkshire, YO18 8EA
01751 472 812
phil@pjnorman.co.uk
www.pjnorman.co.uk

Northern Structures Ltd

Amble Industrial Estate, Amble, Northumberland, NE65 0PE
01665 710 746
anthony.nelson@northernstructures.co.uk
www.northernstructures.co.uk

P McKenna's Agricultural Service Ltd

Esh Winning Industrial Estate, West Terrace, Esh Winning, Durham, DH7 9PT
0191 373 3187
pmckenna_agri_servis@hotmail.com

Paul Huxley Construction Ltd

Unit 25 Rednal Industrial Estate, West Felton, Oswestry, Shropshire, SY11 4HS
07432 637432
sales@paulhuxleyconstruction.co.uk
www.paulhuxleyconstruction.co.uk

PDL Timber and Steel Frame Construction Ltd

26 Tudor Road, Lincoln, Lincolnshire, LN6 3LL
07768 566 589
pdlconstruction1@ntlworld.com

Powell & Co. Construction Ltd

Longmoor, Shirleath, Kingsland, Herefordshire, HR6 9RG
sales@powellbuildings.com
www.powellbuildings.com

Preston Steel Structures

Ryecroft, Newby Clapham, Nr Lancaster, Lancashire, LA2 8JD
01524 251 542
info@prestonsteelstructures.co.uk
www.prestonsteelstructures.co.uk

R E Buildings Ltd

Spout House, Bay Horse, Lancaster, Lancashire, LA2 9DE
01524 792 247
sales@rebuildings.co.uk
www.rebuildings.co.uk

R J Doak & Sons Ltd

Northfaulds, Lanark, Lanarkshire, ML11 7SA
01555 661 425
rjdoakltd@gmail.com
www.doakco.com

RLH Welding & Fabrications Ltd

The Workshops, 32 Ford House Road, Newent, Gloucester, GL18 1LQ
01531 828761
info@rlhwelding.co.uk
www.rlhwelding.co.uk

RM Gibbons Ltd

1 Catherines Lane, Bickerstaff, Ormskirk, Lancashire, L39 9EL
07584 045 382
gibbonsroger@aol.com

Robinson Structures Ltd

Eagle Park Industrial, Alfreton Road, Derby, Derbyshire, DE21 4AE
01332 574 711
sales@robinsons.com
www.robinsons.com

Robinsons Scotland Ltd

Broomhouses 2 Industrial Estate, Old Glasgow Road, Lockerbie, Dumfries and Galloway, DG11 2SG
01576 205 905
sales@rbscotland.co.uk
www.rbscotland.com

Ron Whitfield Engineers Ltd

Manorfield, Fridaythorpe, Drifffield, Yorkshire, YO25 9RT
01377 288 263
gwhitfield72@gmail.com

RWHB Ltd

Belston Cottage, Sinclairston, Cumnock, Ayrshire, KA18 2RU
01290 700 073
enquiries@rwhb.co.uk
www.rwhb.co.uk

S & A Fabrications Ltd

Harmire Enterprise Park, Barnard Castle, County Durham, DL12 8EH
01833 690 379
fabs@s-and-a.co.uk
www.s-and-a.co.uk

S. Schofield Steel Fabrications Ltd

Cookson's Yard Beverley, Carr Lane, Hambleton, Lancashire, FY6 9BB
01253 702 806
info@schofieldsteel.co.uk
www.schofieldsteel.co.uk

Scorpion Engineering Construction Ltd

Brunel Court, Elcot Lane, Marlborough, Wiltshire, SN8 2AZ
01672 514 471
sales@scorpionbuildings.co.uk
www.scorpionbuildings.co.uk

SDM Fabrication Ltd

Foundry Way, March, Cambridgeshire, PE15 0WR
01354 660 895
richard@sdmlimited.co.uk
www.sdmstructures.com

Severn Fabrications Ltd

Unit 3, Maesbury Mill, Industrial Park, Oswestry, Shropshire, SY10 8BB
01691 653 506
info@severnfabrications.co.uk
www.severn-fabrications.co.uk

Shufflebottom Ltd

Cross Hands Business Park, Cross Hands, Llanelli, Carmarthenshire, SA14 6RE
01269 831 831
alex@shufflebottom.co.uk
www.shufflebottom.co.uk

Skinners Engineering Ltd

First Business Park, Holsworthy Industrial Estate, Dobles Lane, Holsworthy, EX22 6HN
01409 254 430
skinnersengineeringltd@gmail.com
www.skinnersengineering.co.uk

Smith Contracts Scotland Ltd

Lawersbridge Farm, Mauchline, Ayrshire, KA5 6EU
01290 559358
enquiries@smithcontractsscotland.com
www.smithcontractsscotland.com

South West Steel Construction Ltd

Holsworthy Industrial Estate, Holsworthy, Devon, EX22 6ER
01409 253 211
info@southweststeelconstruction.co.uk
www.southweststeelconstruction.co.uk

Steel Fabricators (Wales) Ltd

3 Nantyglyn, Cwmann, Lampeter, Dyfed, SA48 8JT
01570 493 253
enquiries@steelfabwales.co.uk
www.steelfabwales.co.uk

Steeltek Structural Steel Ltd

Unit 4-6 Mallard Industrial Park, Charles Street Horbury, Wakefield, Yorkshire, WF4 5FH
01924 283 355
Neil.Fox@steeltek.co.uk
www.steeltek.co.uk

Structural Weld Ltd

Church Farm, Church Lane, East Lydford, Somerton, Somerset, TA11 7HD
01963 351 293
structuralweld@btconnect.com

Supercraft Structures Ltd

Shobdon Airfield, Shobdon, Near Leominster, Herefordshire, HR6 9NR
01568 708 456
info@supercraftltd.co.uk
www.supercraftltd.co.uk

T & M Buildings Ltd

16 Town Park, Torrington, Devon, EX38 7AQ
01805 623 555
tim.tandmbuildings@gmail.com
www.tandmbuildings-devon.co.uk

T & P Metcalfe & Sons Ltd

Forgewood House, Wray Road, Wennington, Lancaster, Lancashire, LA2 8NN
01524 222 230
Info@tpmetcalfe.co.uk
www.tpmetcalfe.co.uk

Tilke Engineering Ltd

Lyndale, Bellhouse Lane, Anslow, Burton-on-Trent, Staffordshire, DE13 9PA
01283 563 756
craig@tilkeengineering.co.uk
www.tilkeengineering.co.uk

Timmins Engineering and Construction Ltd

Innovation Works, Caenby Hall Business Park, Caenby Corner, Market Rasen, Lincolnshire, LN8 2BU
01673 878800
info@timminsagricultural.co.uk
www.timminsagricultural.co.uk

Titan Steel Ltd

Kirkton, Kinellar, Aberdeen, AB21 0SB
01224 791 178
info@titansteel.co.uk
www.titansteel.co.uk

United Products Ltd

Evenwood Industrial Estate, Copeland Road,
Evenwood, County Durham, DL14 9SF
01388 834 295
Michael.Hammond@cagroup.ltd.uk
www.united-products.co.uk

W B Brown Ltd

Scotby Road, Scotby, Carlisle, CA4 8BJ
01228 513112
Brown-barry1@sky.com

W E Phillips and Sons Ltd

Unit 3, Ironbridge Industrial Estate, Gittisham,
Honiton, Devon, EX14 3AN
info@wephillipsandsons.co.uk
www.wephillipsandsons.co.uk

W H Ricketts & Sons

Forge Works, Ffynnon Gynydd, Glasbury on Wye,
Powys, HR3 5LX
01497 847 250
info@whrickettsandsons.co.uk

Webcox Engineering Ltd

Harris Rd, Calne, Wiltshire, SN11 9PT
01249 813 225
sales@webcox.co.uk

Wilson Construction Ltd

East Stobswood Farm Cottages, Widdrington,
Morpeth, Northumberland, NE61 3AY
01670 791 404
wilsonconstruction@hotmail.co.uk
http://wilsonconstruction.co.uk/

Worman Construction Ltd

Beachley House, Beach Road, St. Brides, Newport,
Gwent, NP10 8SH
01633 681 710
worman.constructionltd@btinternet.com
www.worman-construction.co.uk

Wrightway Structural Steels Ltd

The Steelyard, R/O Greycotts, Copes Road,
Great Kingshill, Buckinghamshire, HP15 6JA
07738 402 608
sales@wrightwaysteels.co.uk
www.wrightwaysteels.co.uk

Yield Engineering Ltd

118 Church Street, Whaddon, Cambs, SG8 5RX
01763 243 300
simon@yieldengineering.co.uk
www.yieldengineering.co.uk

Yorkshire Steel Buildings (Holdings) Ltd

Aiskew Bank Farm, Back Lane, Bedale, Aiskew,
Yorkshire, DL8 1AU
01677 423 324
info@yorkshiresteelbuildings.co.uk
www.yorkshiresteelbuildings.co.uk

Supplier Members

Companies that manufacture or supply products related to the rural and industrial buildings industry

3DCAD4U Ltd

19 Ellerbeck Road, Thornton Cleveleys, Blackpool,
Lancashire, FY5 1DH
07512 104890
john@3dcad4u.com
www.steel-connections.co.uk

A Steadman & Son

Warnell, Welton, Carlisle, Cumbria, CA5 7HH
01697 478 277
info@steadmans.co.uk
www.steadmans.co.uk

Acorus Rural Property Services Ltd

Old Market Office, Risbygate Street,
Bury St Edmunds, Suffolk, IP33 3AA
01284 753271
mike.bamforth@acorus.co.uk
www.acorus.co.uk

AJN Steelstock Ltd

Ickneild Way, Kentford, Newmarket, Suffolk,
CB8 7QT
01638 555500
sales@ajnsteelstock.co.uk
www.ajnsteelstock.co.uk

Albion Sections Ltd

2 Albion Road, West Bromwich, West Midlands,
B70 8BD
01215 531 877
tom.hughes@albionsections.co.uk
www.albionsections.co.uk

Briarwood Products Ltd

Briarwood Business Park, Commerce Way, Walrow
Industrial Estate, Highbridge, Somerset, TA9 4AG
01934 641 446
norman.morter@briarwoodproducts.co.uk
www.briarwoodproducts.co.uk

Capital Steel Group Ltd

Third Floor, 82 Union Street, Glasgow, G1 3QS
0141 4049 360
alanh@capitalsteelbuildings.co.uk
www.capitalsteelbuildings.co.uk

Cembrit Ltd

Studio 39, Thames Innovation Centre,
2 Veridion Way, Erith, Kent, DA18 4AL
0208 320 1184
ged.ferris@cembrit.co.uk
www.cembrit.co.uk

Duggan Steel Group Ltd

Dublin Road, Kilkenny, Ireland, R95 CCY5
00353 567 722 485
MEGAN@steel.ie
www.steel.ie

Farmsmart Events Ltd

Killington Hall Farm, Killington, Kirkby Lonsdale,
Carnforth, Lancashire, LA6 2HA
015396 20255
andy@farm-smart.co.uk
www.farm-smart.co.uk

Filon Products Ltd

Unit 3, Ring Road, Zone 2, Burntwood Business
Park, Burntwood, Staffordshire, WS7 3JQ
01543 687300
markwilcox@filonproducts.co.uk
www.filon.co.uk

Hadley Group

123 West Bromwich Street, Oldbury,
West Midlands, B69 3AZ
0121 555 1342
brian.cartwright@hadleygroup.com
www.hadleygroup.co.uk

Hereford Galvanizers Ltd

Westfields Trading Estate, Hereford,
Herefordshire, HR4 9NS
01432 267 664
peter.shipley@hereford.galvanizers.co.uk
www.galvanizers.co.uk

Hornsey Steels Ltd

Riverlea, Bedstone Road, Shropshire, SY7 0AQ
01547 530419
info@hornseysteels.co.uk
www.roofing-sheets.co.uk

Huck Nets (U.K.) Ltd,

Gore Cross Business Park, Corbin Way, Dorset,
DT6 3UX
01308 425 100
dave.collins@hucknetting.co.uk
www.huck-net.co.uk

IAE

Mossfield Road, Adderley Green, Longton,
Stoke-on-Trent, Staffordshire, ST3 5BW
01782 339 320
lee.scragg@iae.co.uk
www.iae.co.uk

James E. Smith (Timber) Ltd

Soho Pool Way Park Road, Hockley, Birmingham,
B18 5JA
0121 5232 261
dave@jestimber.co.uk
www.jestimber.co.uk

Joris Ide NV

Elmbridge Court, Gloucester, GL3 1JZ
01452 412 069
tim.hosken@jorisode.co.uk
www.jorisode.com

Joseph Ash Galvanizing

The Alcora Building 2, Mucklow Hill, Halesowen,
Worcestershire, B62 8DG
0121 504 2560
stevenh@josephash.co.uk
www.josephash.co.uk

Kaltenbach Ltd

3 Caxton Park, Caxton Road, Bedford, MK41 0TY
01234 213 201
d.wilkins@kaltenbach.co.uk
www.kaltenbach.co.uk

Kingspan Insulated Panels Ltd

Greenfield Business Park 2, Greenfield, Holywell,
Flintshire, CH8 7G
01352 716 195
paul.grimshaw@kingspan.com
www.kingspanpanels.co.uk

Lion Trading GB Ltd

Unit 1, Bloomhill Road, Moorends, Doncaster,
Yorkshire, DN8 4SP
01405 812 285
john@lion-trading.co.uk
www.lion-trading.co.uk

Marley Eternit Ltd

Lichfield Road, Branston, Burton on Trent,
Staffordshire, DE14 3HD
01283 722 500
adambotterill@marleyeternit.co.uk
www.marleyeternit.co.uk

MDS Industries Ltd

Booth Street, Smethwick, Birmingham, B66 2PF
0121 565 0022
ralph@mdsind.co.uk
www.mdsind.co.uk

Pro Net GB Ltd

Unit 1, Bloomhill Road, Thorne Moorends,
Doncaster, DN8 4SP
01405 817557
ian@pronetgbld.co.uk
www.pronetgbld.co.uk

RNT Tanks & Silos Ltd

Unit 8 Drove Road, Gamlangay, Sandy,
Bedfordshire, SG19 2HX
01767 654 916
ashley.gurney@rnttanks.com
www.rnttanks.com

StruMIS Ltd

Truro House, Derby, Derbyshire, DE21 6LY
01332 545 800
j.hardy@strumis.com
www.strumis.com

Tata Steel

Shotton Works, Deeside, Flintshire, CH5 2NH
01244 892 303
ian.clarke@tatasteel.com
www.tatasteelconstruction.com

Thomas Panels & Profiles Ltd

Unit 5, Southern Avenue, Leominster, Hereford,
Herefordshire, HR6 0QF
01568 610 000
george@panelsandprofiles.co.uk
www.panelsandprofiles.co.uk

United Roofing Products

Longbridge Meadow Industrial Estate,
Cullompton, Devon, EX15 1BT
01884 839 302
lukeevans@unitedroofingproducts.com
www.unitedroofingproducts.com

Wedge Group Galvanizing Ltd

Stafford Street, Willenhall, West Midlands,
WV13 1RZ
01902 600 704
Claire.Jones@wedge-galv.co.uk
www.wedge-galv.co.uk

Contractor Members

Companies that work on site,
groundworkers, steel erectors,
cladders and general contractors

Curtis Engineering Frome Ltd

Curtis House, Manor Road, Marston Trading Estate, Frome, Somerset, BA11 4BH
01373 462 126
sales@curtisengineering.co.uk
www.curtisengineering.co.uk

Dormar Fabrications (Bilston) Ltd

Jubilee House, Halesfield 2, Telford, Shropshire, TF7 4QH
01952 585 736
kshepherd5@btinternet.com

Hilro Consulting Ltd

The Outhouse, Yewden Farm, Mill End, Hambleden, Oxfordshire, RG9 6RJ
01491 571 770
info@hilroconstruction.co.uk
www.hilroconstruction.co.uk

Industrial Building Solutions Ltd

64 Azura Close, Woolbridge Industrial Park, Wimborne, Dorset, BH21 6SZ
01202 822 337
info@indbs.co.uk
www.indbs.co.uk

J.D. Richmond and Son Ltd

46, Parsonage Road, Horsham, West Sussex, RH12 4AN
01403 266 124
richmond.46@btinternet.com

JA & CJ Martin Ltd

Campanile, Dippertown, Okehampton, Devon, EX20 4PT
07810 124291
james.martin19@btinternet.com

J A S Construction

2 Tettaridge Gate, Launceston, PL15 9QX
01409 255 787
jas.construction.js@gmail.com
www.jasconstruction.co.uk

John Edwards

Beudy Singrig, Rhydymain, Dolgellau, Gwynedd, LL40 2BP
01341 450 688
cefnbraich@aol.com

Key Projects Ltd

Woodlea Cottage, Clehonger, Hereford, Herefordshire, HR2 9TP
01981 250 342
info@keyprojects.org
www.keyprojects.org

Leith Hill Plant Ltd

Oakwood Mill Farm, Stane Street, Ockley, Dorking, Surrey, RH5 5LX
01306 628 412
info@lhpl.co.uk, www.lhpl.co.uk

P. Phillips Contractors Ltd

Bumble Cottage, 6 Hilltop, Tillington, Petworth, West Sussex, GU28 9AQ
01798 343 392
pphilipscontractorsltd@gmail.com
www.ppcontractorsltd.co.uk

Re-Cladding UK Ltd

Works, Unit 4, Building 9, Preese Hall Farm Weeton, Near Kirkham, Lancashire, PR4 3HT
07980 897 000
sales@recladdinguk.com
www.recladdinguk.co.uk

Redwing Structures (Marlow) Ltd

Willow Cottage, Spurgrove Lane, Frieth, Oxon, RG9 6PA
01494 880857
david@redwingmarlow.co.uk
www.redwingmarlow.co.uk

Scotts of Whittington Ltd

Great Whittington, Tyne and Wear, Newcastle Upon Tyne, NE19 2HP
01434 672 288
office@scottsofwhittington.co.uk

Southcon (Kingstone) Ltd

Gooses Foot Business Park, Kingstone, Hereford, Herefordshire, HR2 9HY
01981 251 251
sales@southconkingstone.co.uk
www.southconkingstone.co.uk

Steel Build Masters Ltd

Pig Lane, Bishop's Stortford, Hertfordshire, CM22 7PA
0800 368 9100
sales@steelbuildmasters.co.uk
www.steelbuildmasters.co.uk

Affiliate Members

Individuals or companies that are
allied to the rural and industrial
design and building industry, most
likely offering a consultancy service

A.C.P. (Concrete) Ltd

Wood Lane Business Centre, Uttoxeter, Staffordshire, ST14 8JP
01889 598 660
sales@acp-concrete.co.uk
www.acp-concrete.co.uk

Balfours

New Windsor House, Oxon Business Park, Shrewsbury, Shropshire, SY3 5HJ
01743 241 181
enquiries@balfours.co.uk
www.balfours.co.uk

Blue Dice Solutions Ltd

Denham Marina, 100 Acres, Sanderson Road, Uxbridge, Middlesex, UB8 1NB
07877 092 117
dpayne@bluedicesolutions.co.uk
www.bluedicesolutions.co.uk

Bolesworth Estate Company Ltd

The Estate Office, Bolesworth Castle, Bolesworth Road, Tattenhall, Chester, Cheshire, CH3 9HQ
01829 782 210
info@bolesworth.co.uk
www.bolesworth.co.uk

Carter Jonas

82 Micklegate, York, Yorkshire, YO1 6LF
01904 558207
laura.graham@carterjonas.co.uk

Cow Plan Ltd

Rayens Close House, Long Ashton, Bristol, BS41 9HL
07751 050158
ivor@cowplan.com
www.cowplan.com

Fisher German Chartered Surveyors

The Estates Office, Norman Court, Ashby-de-la-Zouch, Leicester, Leicestershire, LE65 2UZ
01530 412 821
andrew.jackson@fishergerman.co.uk
www.fishergerman.co.uk

G.E. Baker (UK) Ltd

Heath Road, Woolpit, Bury St Edmunds, Suffolk, IP30 9RN
01359 240 529
baker@quality-equipment.co.uk
www.quality-equipment.co.uk

Halifax Estates Management Co.

Estate Office, Bugthorpe, York, Yorkshire, YO4 1QG
01759 368 219
dlord@halifaxestates.co.uk

Promar International Ltd

Hill View, 63 Wells Road, Glastonbury, Somerset, BA6 9BY
07971 119034
paul.henman@genusplc.com
www.promar-international.com

RDA Consulting

1 MacDowall Street, Suite 2.26 & 2.27, Paisley, PA3 2NB
0141 561 7299
rdaconsulting@btconnect.com
www.rdaconsulting.co.uk

Savills (UK) Ltd

Olympic House, Doddington Road, Lincoln, Lincolnshire, LN6 3SE
01522 508 970
dmorris@savills.com
www.savills.com

Savills (UK) Ltd

28 Castle Street, Dumfries, DG1 1DG
01387 263 066
rhenderson@savills.com
www.savills.com

Shand Building Design Ltd

The Grieves House, Schivas, Ythanbank, Ellon, Aberdeenshire, AB41 7TN
01358 761 377
douglas@sbdLtd.co.uk
www.sbdLtd.co.uk

Singleton & Co.

31 Cadley, Marlborough, Wiltshire, SN8 4NE
01672 514 241
guy.singleton@singletonandco.co.uk

Slyne Consulting Ltd

The Office, Tiverton, Lancaster Road, Slyne, Lancaster, LA2 6AL
01524 935085
info@slyneconsulting.co.uk

Stephenson & Son

York Auction Centre, Murton, York, Yorkshire, YO19 5GF
01904 489 731
wrs@stephenson.co.uk
www.stephenson.co.uk

The Bathurst Estate

Estate Office, Cirencester Park, Cirencester, Gloucestershire, GL7 2BU
01285 707663
edward.allsop@bathurstestate.co.uk

Trustees of Chatsworth Settlement (Yorkshire Estate)

Estate Office, Bolton Abbey, Skipton, Yorkshire, BD23 6EX
01756 710 227
estateoffice@boltonabbey.com

Woolhanger Farming Partnership

Woolhanger Farm, Barnstaple, Devon, EX31 4RF
01598 763309
gmellstrom@glengrp.co.uk

Honorary Members

Andrew Cooke
Alastair Hardwick
Tony Hutchinson
Malcolm James
Clive Mander
Chris Pearce
Jim Loynes

Concessionary Members

Peter Blackwell
Arthur Brazel
Ian Gill
Peter Hardwell
Alan Hayes
Roger Henderson
Nicholas Parry
G B Tatman
David Wood

Protected by



Complete Building Envelope Solutions featuring Kingspan RW Pitched Roof System



Kingspan Insulated Panels RW Roof system is a factory-engineered system for very fast installation and completion of a variety of agricultural and industrial buildings.

The system comprises a complete range of structural steel products, high performance insulated panels, insulated gutters, superior polycarbonate daylighting, height-safety systems and a bespoke range of corners and flashings. Kingspan Insulated Panel buildings combine high performance structure and insulation with rapid build and protected lifetime performance.

Kingspan Insulated Panels
Greenfield Business Park No.2, Holywell, Flintshire CH8 7GJ
Tel: +44 (0) 1352 716100 www.kingspanpanels.co.uk





Technical Update

RIDBA Load Tables Versus Bespoke Calculations

As noted previously, even though most agricultural buildings look very similar, consisting of steel portal frame structures with timber or steel purlins and various combinations of roof and wall cladding, differences in size, location and use mean that some form of structural design is always required. At the heart of the design process is the sizing of the structural frame elements (rafters and columns). This is usually done by a structural engineer using software, since the design of portal frames is quite complex and would be very laborious to undertake by hand. For initial sizing purposes, it is possible to use design charts or sets of tables such as those published by RIDBA. Due to their limitations, however, such charts and tables should not be used as an alternative to employing the services of a structural engineer, but as a design aid to allow steel weights to be estimated quickly and at low cost.

The aim of this article is to present the background and methodology to the RIDBA load tables and to discuss the limitations of the tables compared to bespoke engineering calculations. Example frame sizes are given to highlight the conservatism in this design approach and to illustrate the influence of building location on rafter and column size. The aim is not to discourage the use of the tables, but to ensure that they are used correctly and appropriately.

The RIDBA Load Tables

For many years RIDBA members and others had benefited from the 'Fearn tables', a wonderfully comprehensive document that allowed frame designers to estimate the rafter and column sizes for a range of portal frames and even design the connections, baseplates and timber purlins. By 2014, however, these tables were 30 years old and no longer in line with current design practice. The RIDBA load tables are based on the old 'Fearn tables', but updated to be compatible with the latest design standards, namely the Eurocodes and BS 5502-22:2003+A1:2013. The former provide engineers with recommendations on all aspects of structural design, including calculation of the wind and snow loads, designing structural members in steel, concrete and timber and even certain aspects of steelwork detailing. The latter provide specific recommendations for agricultural buildings, including reduction factors that may be applied to the applied loads to allow for the lower consequences of failure of some agricultural buildings. It is worth reminding readers at this point that BS 5502-22:2003 (the old version) has been withdrawn by BSI and should no longer be used.

The RIDBA load tables are based on Eurocode design calculations for four snow and wind load cases up to 200m altitude. They are specifically intended for Class 2 buildings to BS 5502-22 (i.e. not for industrial buildings) and are generally suitable for most regions of England and Wales. The rafter and column sizes presented in the tables were obtained by calculating the wind and snow loading for the specified case (given in terms of snow zone and altitude) and then performing an 'elastic' analysis to obtain the bending moments, shear and axial forces in the members. Armed with this information, suitable Universal Beam sections were selected from published section tables (BCSA/SCI 'Blue Book'). The analysis was repeated for a range of spans, frame spacings and building heights and the resulting section sizes were tabulated for ease of use. Therefore, for the specific cases considered, the section sizes presented in the tables are simply the outputs of a structural engineer's calculations. However, for all other cases, there are bound to be discrepancies between the sections presented in the tables and those that would be obtained from bespoke calculations. These discrepancies and the reasons behind them are discussed below.

Comparison of tables against bespoke designs

There are two main sources of conservatism in the RIDBA load tables:

1. The use of an elastic analysis method
2. Differences between the actual load case and that assumed in the tables

Structural engineering analysis may be 'elastic' or 'plastic'. Elastic analysis is based on the elastic bending moment distribution for the given load case, i.e. the bending moments are calculated from the geometry of the frame and the relative stiffness of the columns and rafters without plastic hinges. Elastic analysis is relatively easy to perform and is valid for all types of structure. However, this type of analysis does not allow for the additional reserve of strength possessed by a portal frame following the formation of one or two plastic hinges, i.e. between the steel yielding resulting in the formation of a plastic hinge and a mechanism forming resulting in the collapse of the frame. Plastic analysis takes account of the full capacity of the frame by considering the structure at the point of collapse, immediately before the formation of the final hinge. This type of analysis is only valid for continuous structures with rigid joints, such as portal frames, but is used extensively by specialist portal frame design software.

The example below illustrates the difference between elastic and plastic analysis:

Example 1

Cattle shed in Oxfordshire at 166m altitude and 140km from the sea. (See Diagram 1)
Span: 17.75m
Height to eaves: 5.0m
Frame spacing: 6.0m
Roof pitch: 15°
The member sizes (S275 steel) for elastic and plastic analysis are given in Table 1.

Table 1: Plastic v elastic design

	Plastic design	Elastic design
Column	357 x 171 x 51 UB	457 x 191 x 67 UB
Rafter	305 x 102 x 28 UB	305 x 165 x 40 UB

As noted above, the design data presented in the tables related to four specific cases. These were:

- Load case 1: Snow zone 3, 100m altitude, 24 m/s basic wind speed (vbmap)
- Load case 2: Snow zone 4, 200m altitude, 24 m/s basic wind speed (vbmap)
- Load case 3: Snow zone 2, 100m altitude, 24 m/s basic wind speed (vbmap)
- Load case 4: Snow zone 3, 100m altitude, 22 m/s basic wind speed (vbmap)

In all cases, it was assumed that the location of the building is 1km from the sea and exposed to the prevailing south westerly wind (e.g. close to the south or west coast of the UK). These assumed conditions are clearly unrealistic for the majority of buildings, but were selected to ensure that the tables were safe to use.

To illustrate the impact of building location on the design of the steel frame, consider the following example:

Example 2

Same building geometry as Example 1, with unrestrained columns, and located near Huntingdon (14m altitude and 60km from the sea). Huntingdon lies in snow zone 3 close to the 22 m/s wind contour (on the Eurocode wind map), so the appropriate load case in the RIDBA load tables is 'Load case 4'.

The closest building size is 18m span, 5.5m height and 6.1m frame spacing. The member sizes obtained from the load tables and for the precise location (using elastic analysis) are shown below (S355 steel).

Table 2: Load table v exact location

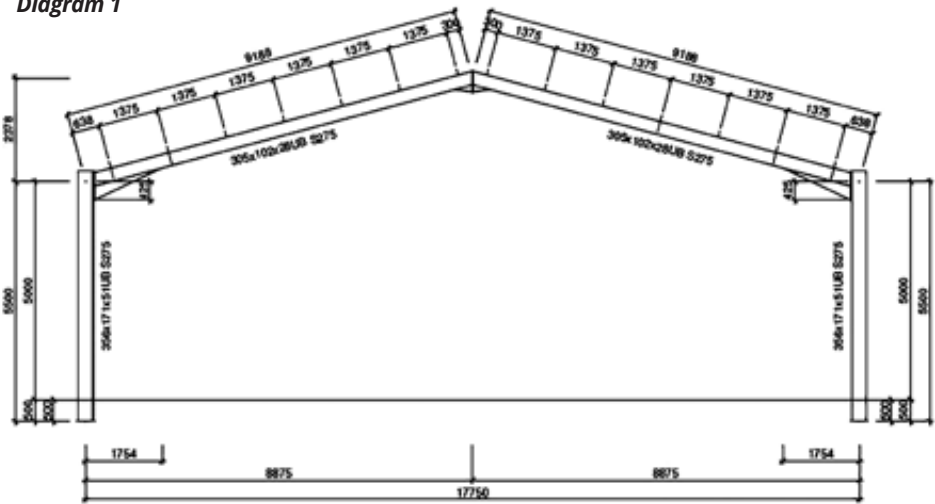
	Load table	Exact location
Column	406 x 178 x 60 UB	356 x 171 x 51 UB
Rafter	305 x 165 x 40 UB	305 x 102 x 28 UB

It is apparent that designing the frame for the exact location, rather than relying on the over-conservative assumptions in the load tables, can result in a significant cost saving in terms of steel weight (15% for the column and 30% for the rafter in this example).

Concluding remarks

The RIDBA load tables are a useful means of estimating the member sizes at tender stage, but the assumptions on which they are based will be over-conservative for many cases. RIDBA recommends that steelwork contractors should always engage the services of a qualified and competent structural or civil engineer to undertake the final design of the building structure. This design should be based on bespoke loading conditions for the specific location in order to maximise the efficiency of the design. To order a copy of the RIDBA Load Tables contact admin@ridba.org.uk.

Diagram 1



Dr Martin Heywood
RIDBA Technical
Consultant



Dr Martin Heywood, a specialist in the structural engineering of agricultural and industrial type steel framed buildings, is the technical consultant for RIDBA members.

Martin represents RIDBA on the B/549 committee and the sector on B/525/1 and CB/203.

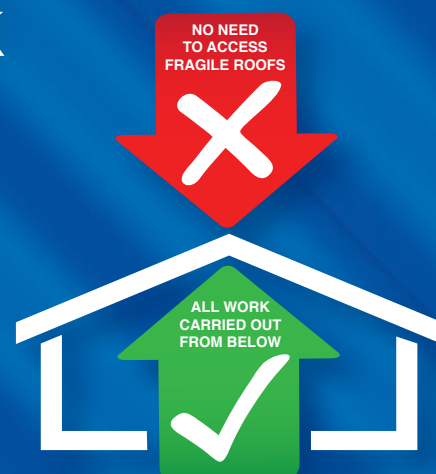
For further information contact: Technical@ridba.org.uk.



Replacing rooflights or roof sheets?

Fragile roofs put lives at risk
and you could be liable.

Insist your contractor
uses **Filon Fixsafe**.



Figures published by the Health & Safety Executive show that falls through fragile roof materials caused over one quarter of fatal accidents in the construction industry. Fixsafe addresses the problem and is playing a major role in reducing this statistic.

Fixsafe allows sheets to be replaced from below, eliminating the need to access fragile roofs and thereby greatly increasing site safety. By removing the requirement for costly safety netting, roof staging or external scaffolding, on-site time is reduced and access equipment costs are minimised.

Replacing rooflights from below is an HSE recommended method and complies with Regulation 9 of the Work At Height Regulations 2005. Protect your roofers and yourself by insisting on Fixsafe.

We also offer:

- Insulated rooflights for energy-saving upgrades and refurbishment
- Lightweight over-roofing for cost-effective roof refurb with minimal disruption.

For details, please call us on **01543 687300** or visit **www.filon.co.uk**



Filon Fixsafe allows replacement rooflights or roof sheets to be installed from below, avoiding the need to access fragile roofs



FILON®



Member News

Celebrating 40 years of Supplying British Farmers



This month marks a very momentous occasion at Briarwood Products as they celebrate 40 years of supplying farmers across the UK.

Briarwood Products originated from humble beginnings at Alan Janes' family farm near Weston-Super-Mare back in 1978. As a farmer himself, Alan understood what was key to running a successful farm and was able to use his farming knowledge to seek out the roofing product – EUROSIX.

Soon he was supplying local farmers, and on the strength of the superior roofing sheets as well as approachable customer service and fast delivery the company successfully grew into what is today - the UK's largest stock of Fibre Cement Roofing.

Oliver Janes has inherited the running of the business and intends to continue to grow the company, expanding the range of roofing products further, whilst offering the same friendly customer service and second to none delivery.

Briarwood Products has had the opportunity to be part of so many varying projects over the years: from local projects like Sedgemoor market, to 'green' projects such as a Biomass and recycling centre which supplies the Eden Project, to government projects like the MOD equestrian centre, to high profile projects such as Welshpool livestock market given the Royal seal of approval by the Queen and award winning projects like Pierpoint Dairy as well as projects for celebrities such as Hugh Fearnley-Whittingstall.

Even though the company has grown significantly, its farming family run ethos has not changed. The family also remain farmers, continuing to run their own beef farms locally.



Briarwood Products is in a position to offer customers an unrivalled range of EUROSIX Fibre Cement materials from stock (all held under cover) and an even larger stockholding of associated materials. There are also plans to develop and expand our product range which can all be distributed around the UK at short notice using our own fleet of transport from a new site of over 21 acres.

Alan and all staff at Briarwood Products would like to thank their customers for their continued support and the recent move to larger premises is a very positive reflection of the strong business relationships built together. The relocation is a statement of Briarwood's plans to support your future business requirements from their new, larger offices and covered warehouse at Highbridge in Somerset.

Briarwood's commitment to the largest stockholding of fibre cement sheeting in the UK enables them to support the demands of their customers with many projects around the country.

See www.briarwoodproducts.co.uk for more information.





Member News



Henri Jones Earns Professional Welding Qualifications

Henri Jones, 13-year-old son of Shufflebottom director Alex Shufflebottom and nephew of director Wesley Shufflebottom, has achieved professional welding qualifications. Henri successfully carried a welder approval qualification test of a multi-layer inline plate butt weld and multi-layer T-joint fillet weld. At only 13, he is now a coded welder, working to British and European standards.

These qualifications were carried out in the MAG (Metal Active Gas) welding process, in accordance with the BS EN ISO 9606-1:2017 standard, which will enable Henri to work professionally as a welder when he is old enough.

Llandovery College pupil Henri has learnt from his father, skilled welder Dafydd Jones, owner of D Jones Welding, on the family farm at Llandeilo, Carmarthenshire, and a short distance from the Shufflebottom factory at Cross Hands.

"We are tremendously proud of Henri's achievement," said Alex. "We think he may be the youngest coded welder in the UK. We can't be sure, because there is no national database, but it would be surprising to find a younger one."

Welding tester Aaron Wicks of AW Inspection Services, Bridgwater, Somerset, who assesses welding candidates in South Wales and South West England, said he did not know of a younger coded welder.

"Henri listens very well, which is essential" said Aaron, who added that Henri has good awareness of health and safety. At school, design and technology is one of Henri's favourite subjects, alongside art and sport – he is also a keen rugby player and has often played for Llandovery College in his age group.



First Class Degree Success for Ex-Apprentice Richard

Four years of 70-hour weeks ended in first-class degree celebration for fitter Richard Hinds, head of the maintenance department for Shufflebottom of Cross Hands. Richard, who lives at Llannon, near Llanelli, has achieved a Bachelor of Engineering degree in mechanical and manufacturing engineering with first class honours.

"I studied at the University of Wales Trinity St David part-time for four years while working full-time for Shufflebottom," said Richard, who started at the firm over 11 years ago as an apprentice. "Every Friday I went to university for lectures but most of my studying was undertaken at home after work and at weekends."

"I would spend on average 35 hours a week studying on top of my 30 to 36 hours a week working at Shufflebottom."

The company supported Richard's studies by reducing his working week to four days, and giving time off for completing assignments and for exams. "I'm also grateful to the company and the individuals who helped me gain a first by providing support, information and guidance during the final-year dissertation," he said. "When I started I didn't think I could reach a first, so I'm proud of achieving it."

Richard's degree is directly relevant to his responsibilities at Shufflebottom, which involve managing the maintenance department, providing technical engineering support, and ensuring that equipment adheres to technical specifications and standards, all the time following organisational policies and procedures to ensure quality control, and mentoring a new apprentice.

Completing an apprenticeship himself before starting his degree course was beneficial, Richard said, because it "embedded the foundation of engineering knowledge needed to set me off on the right foot". Now he is applying his theoretical knowledge directly to practical operations day-to-day.

See www.shufflebottom.co.uk for further information.



Member News



SHAPING THE FUTURE IN METAL

UltraZED Purlins Selected by Agricultural Specialist For New Grain Store at TV Farm

As a specialist contractor dedicated to constructing the various types of properties required by the farming industry, Cheshire-based Fowler & Gilbert makes extensive use of the structurally advanced profiles produced by the Hadley Group – including for a recently completed grain store at one of the UK countryside's most popular locations.

Fowler & Gilbert's business is in fact almost exclusively concentrated on agriculture, serving clients across the country involved in arable, beef, dairy and other types of production: designing and constructing barns, byres, stables and many other types of building.

The contractor chooses to utilise Hadley Group's industry-leading UltraZED and other profiles due to their exceptional load-carrying capabilities, low weight and design flexibility, as well as their ready availability.

Simon Turner, Project Manager for Fowler & Gilbert, commented: "90 per cent of what

we do is for agricultural clients providing nationwide coverage, and we have used Hadley Group profiles for a long while now. We know that we can rely on good service support, while there is also the simplicity of specifying UltraZED purlins, and the other profiles, via the Tekla design software that we employ."

In the most recent contract order delivered for Fowler & Gilbert, Hadley Group's Midland premises manufactured a total of 200 UltraZED purlins for the construction of a large new grain store at the Cotswold Farm Park, frequently seen by viewers of BBC's Countryfile programme.

The construction of the grain store also consumed 225 C Sections and 275 Eaves Beams as well as Rafter Column Stays, Apex Ties and Hanger Cleats. Rigidity and racking resistance are provided by elements such as SRS Diagonal Ties and Heavy Duty Diagonal Tie Bars, plus DTW-TS or Diagonal Tie Wire – Tube Struts.

Hadley Group's UltraZED purlins are produced from high tensile steel and have been developed to outperform conventional products; offering excellent strength and spanning characteristics as well as weight savings of between six and 13 per cent. They are CE marked to BS EN 1090 Execution class 4 and are available in a choice of 59 different depth and gauge variations.

As well as being compatible with industry favourite Tekla software, UltraZED purlins can also be specified using Hadley Group's own DesignSuite PRO™ software, speeding the order of cut-to-length sections that can be delivered direct to site and which are very rapid to install. The purlins also provide a generous 70 mm face for fixing sheeting or other cladding materials, while facilitating the free movement of air within the building.

For more information on UltraZED and Hadley Group please visit www.hadleygroup.com.



All images courtesy of Hadley Group



Member News



New Profiled Sheet Fixings Create Building Material and Installation Harmony

New wood Topfix substructure fixings from Marley Eternit bring superior quality and efficiency to your building project.

To simplify ordering and sourcing of building materials, Marley Eternit has recently added two new fixings, the 130mm stainless steel (A2) and 130mm carbon steel wood substructure fixings for fibre cement to its offering.

Through the months of September, October and November, fixings will be included for free with every order of P6 Painted or Farmscape semi-compressed fibre cement profiled sheeting from Marley Eternit. Free fixings supplied, subject to sheet order quantity to site.

While fixings can be ordered separately, the ability to order them together with fibre cement profiled sheeting direct to site will help eliminate project downtime and reduce general supplier paperwork, says Marley Eternit National Development Manager, Grant O'Donnell.

First coastal fixing to the market

According to O'Donnell, agricultural frame manufacturers and contractors need to be selective for the quality of fixings sourced for a project. Up until the development of Marley Eternit's stainless steel fixing, finding a product fit for purpose has been a challenge in coastal region projects.

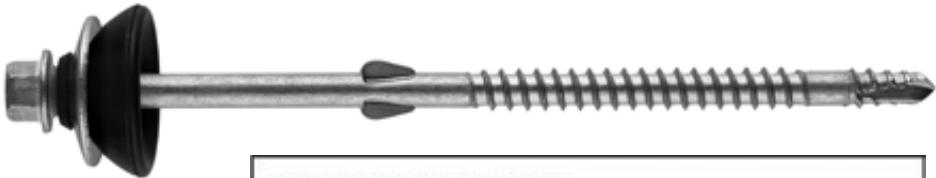
"Our research found salt water corrosion to be an industry issue due to the lack of products for harsh coastal environments," says O'Donnell. "However, our new stainless steel fixing is an unparalleled development for this challenge, with the ability to resist years of corrosion caused by salt water and chemicals."

Quick and easy fixing installation

Along with being comprised of high quality materials, stainless steel and carbon steel, wood substructure fixings are also designed for quick and easy installation. Since fixings are self-drilling, installation doesn't require a pilot hole. Fixings are built with shaft wings to prevent over-drilling and a moulded washer prevents water penetration.

"Our new fixings are a guaranteed way to enhance the standard and efficiency of your next building project," adds O'Donnell. "The perfect designed harmony obtained by combining Marley Eternit's fixings with our British manufactured semi-compressed fibre cement will bring peace of mind and unrivalled quality to your building installations." For further wood substructure Topfix fixing information, please email info@marleyeternit.co.uk giving your name, contact details and enquiry or telephone **01283 722892**. Alternately visit www.marleyeternit.co.uk/topfix-fastener.

-  **Depth Recognition**
The bit allows precise drill fixing to the exact point every time
-  **Prevents Sheet Cracking**
The drill bit ensures the sheets are not crushed or too loose when fitted
-  **Fits Any Drill**
Apply the fixing quick and easy to any drill
-  **Anti-Corrosion**
Stainless steel - For aggressive environments
Carbon steel - Coated for regular applications
-  **No Downtime**
Quantities correct with every sheet order



The new 130mm Stainless Steel, wood substructure profiled sheet fixing from Marley Eternit.

Wood fixings range		
Code	4069994	4069996
Material	Carbon Steel	S / Steel
Screw Length	130mm ± 1.50mm	130mm ± 1.50mm
Thread Length	66 - 69mm	66 - 69mm
WL	44 - 46mm	44 - 46mm
Corrosion Resistant	✗	✓
Coastal	✗	✓

New Topfix Wood Fixings for Profiled Sheeting

Suitable for Roofing and
Cladding Installations



No Downtime

Quantities correct
with every sheet order



Direct Delivery

Now get direct delivery to
site with your sheet order



Suitable For Roofing & Cladding Installations

Providing support clips or a solid base is used when installing vertical
P6 sheets as cladding, otherwise like all fixings the sheets will sag
down under the weight of the sheets



Anti-Corrosion

Stainless steel - For aggressive environments

Carbon steel - Coated for regular applications

Extra High Head

Ensures a better fit of the bit

Moulded Washer

Acts as a seal preventing water
penetration

Shaft Wings

The wings open up the clearance hole
in the fibre cement sheet preventing
cracking

Self-Drilling

Allows for quick and easy
instalment without a pilot hole

Wood fixings range

Code	4069994	4069996
Material	Carbon Steel	S / Steel
Screw Length	130mm ± 1.50mm	130mm ± 1.50mm
Thread Length	66 - 69mm	66 - 69mm
WL	44 - 46mm	44 - 46mm
Corrosion Resistant	✗	✓
Coastal	✗	✓

Stainless Steel ^{A2}

Our new 130mm wood stainless steel fixing, fills a much
needed industry gap and is capable of resisting years of
corrosion from salt, chemicals or coastline environments.

This is an exciting, unrivalled premium product to hit the
market which will protect the quality and value of your
customers' builds.

Free fixings for 3 months

Throughout September, October and November,
Marley Eternit wood substructure fixings will be free
of charge with every order of Marley Eternit P6 Painted
or Farmscape fibre cement profiled sheets. Please call
your Area Sales Manager for further information.



MarleyEternit

an etex company

www.marleyeternit.co.uk/topfix-fastener

01283 722892

P6 | P3
PROFILED SHEETING



FIBRE CEMENT ROOFING SPECIALISTS

UK'S LARGEST STOCK OF FIBRE CEMENT ROOFING AND ACCESSORIES

01934 641 446 | BRIARWOODPRODUCTS.CO.UK



YOUR COMPLETE ROOFING SOLUTION

- UK's Largest Stock of Fibre Cement Roofing and Fittings
- The Only Roofing Supplier you need
- Full colour range available
- GRP Roof Lights
- PVC Rainwater Systems
- Timber Purlins
- Profiled Metal Sheets
- Nationwide Delivery - Fast Order Fulfilment

